

## Kidbrooke Park Road, SE3

### £475,000

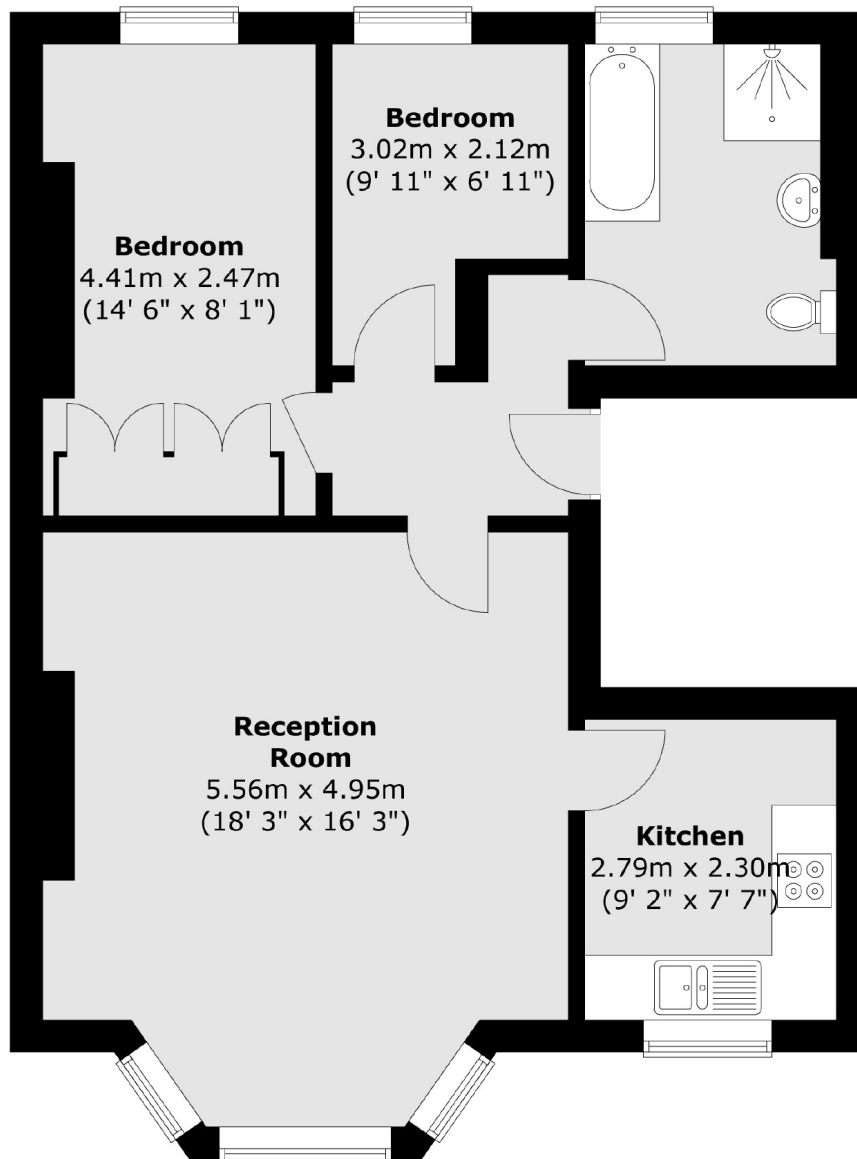
Bright and spacious first floor conversion flat which has period features, long lease and the benefit of being offered with no chain. The reception room has high ceilings and a feature fireplace. Both kitchen and bathroom are in good condition. There is a double bedroom with views over the rear garden, and a second single bedroom. This property would make an excellent first time buy.

Situated in a fabulous position for Blackheath Royal Standard, Westcombe Park Station and Blackheath Village for its shops, bars and restaurants. On bus routes which run regularly to North Greenwich.

### Features

- Spacious First Floor Conversion
- Large & Bright Reception Room
- Shared Garden
- Close To Blackheath Village
- Off Road Parking
- Offered With No Chain

# Kidbrooke Park Road, London, SE3



Total area (approx.) : 61.8 sq. m (665 sq. ft)

## Dexters

Blackheath  
1 Stratheden Road  
London  
SE3 7SX  
Sales  
020 8815 2200

Energy Rating: C. We aim to make our particulars both accurate and reliable. However they are not guaranteed; nor do they form part of an offer or contract. If you require clarification on any points then please contact us, especially if you're traveling some distance to view. Please note that appliances and heating systems have not been tested and therefore no warranties can be given as to their good working order.

 **RICS** | Regulated  
Estate Agent  
and Letting Agent

[dexters.co.uk](https://www.dexters.co.uk)