



Granville Park, SE13

£425,000

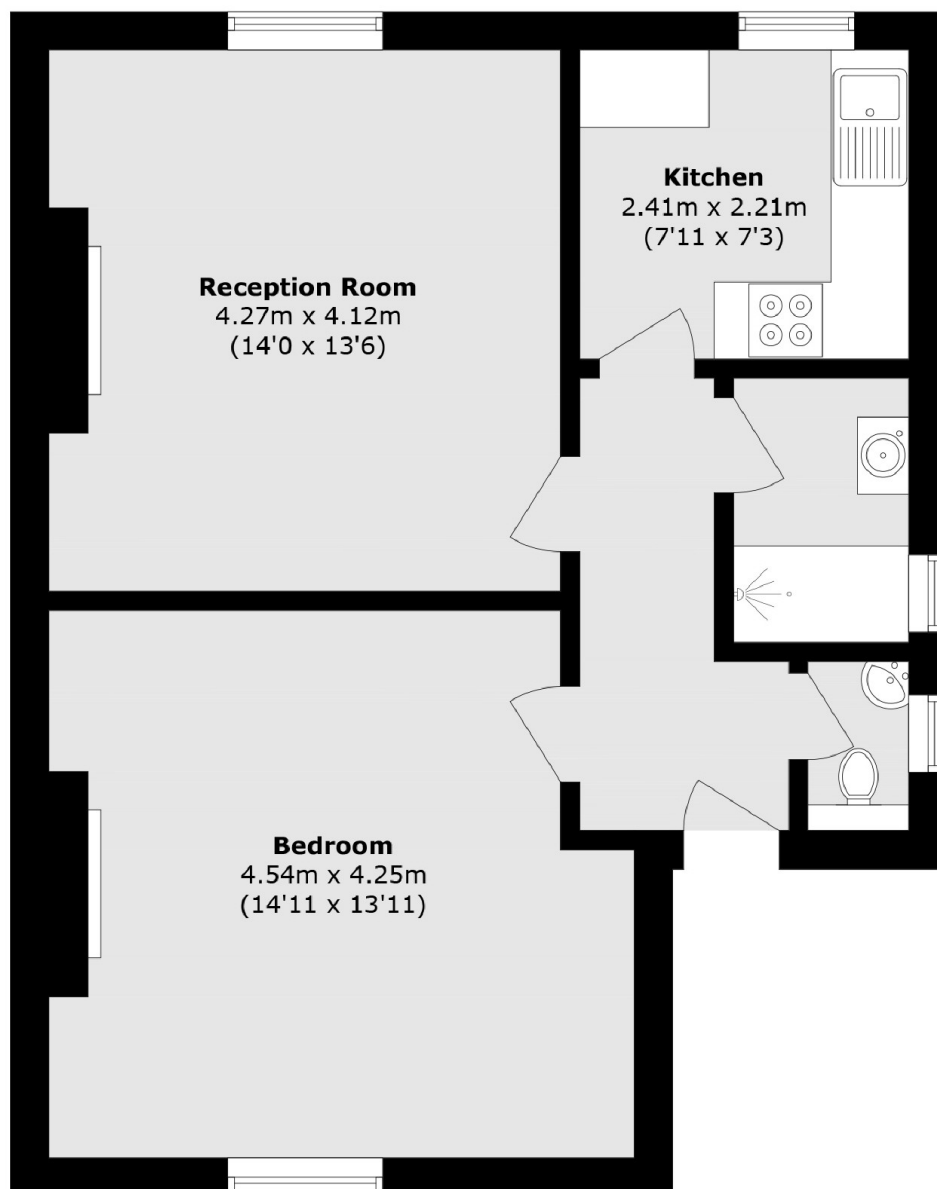
Occupying the entire top floor of this pretty Victorian house comes this spacious and bright one bedroom conversion flat. Within minutes of Lewisham station and close to the heath and Greenwich Park. This lovely property has period features throughout and comes with a share of the freehold. Accommodation comprises of a large reception room with a feature fireplace, separate kitchen, large bedroom, again with a period fireplace and a modern and newly fitted shower room. The garden is South facing and shared.

Granville Park is a quiet tree lined road, ideally located for easy access to the excellent transport links at Lewisham Station serving Canary Wharf and London Bridge. Blackheath Village is a pleasant stroll across the heath offering an array of independent shops, cafés and pubs. The open spaces of Greenwich Park are also within easy reach.

Features

- Bright & Spacious
- Top Floor Flat
- Period Features
- South Facing Communal Garden
- Minutes From The DLR
- Close To Greenwich & Blackheath

Granville Park, London, SE13



Total area (approx.): 51.9 sq. m (558.6 sq. ft)