



Paragon Place, SE3
£2,000,000

Dexters



Paragon Place, SE3

Set behind secure gates with off-street parking, this beautifully presented three-bedroom modern home combines contemporary design with functional living. The property features a generous reception and dining room with floor-to-ceiling glass doors, offering stunning views over the private garden, which is surrounded by mature trees and lush planting for total seclusion.

Inside, a spacious, modern kitchen provides the ideal space for both family life and entertaining, while a dedicated downstairs office offers the perfect work-from-home setup.

Upstairs, all three bedrooms are bright and airy with floor-to-ceiling windows. The principal bedroom boasts a stylish en suite, and the additional bedrooms are served by a sleek, contemporary family bathroom.

This thoughtfully designed home delivers the perfect blend of modern comfort, natural light, and privacy ideal for families or professionals alike.

Situated in the heart of Blackheath Village, minutes from the shops and restaurants and Blackheath Station. There is access to both outstanding private and state primary schools and secondary schools.

Features

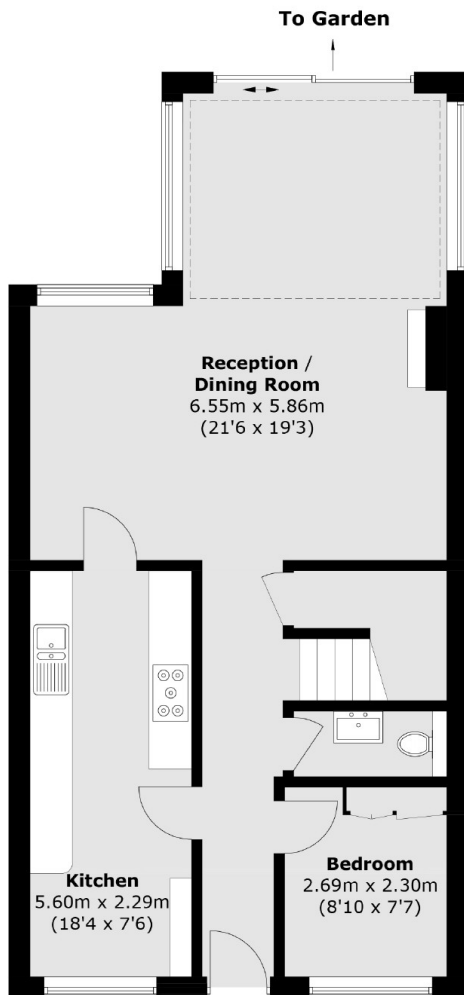
- Contemporary Three Bedroom
- Detached House
- Modern Architectural Design
- In The Heart Of Blackheath Village
- Large Landscaped Garden



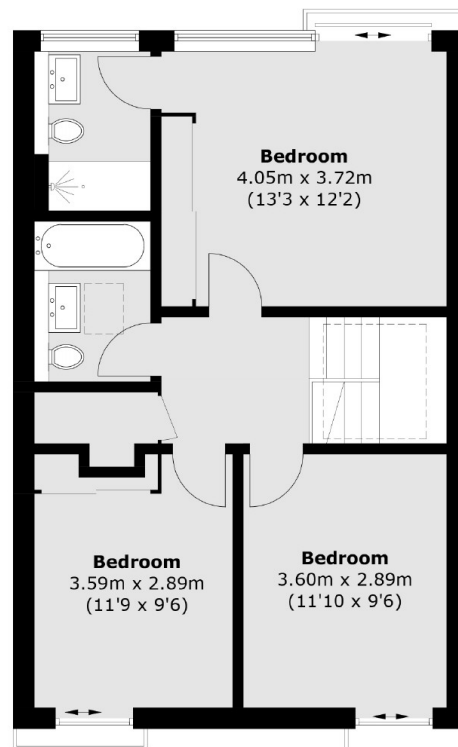




Paragon Place, London, SE3



Ground Floor



First Floor

Total area (approx.): 123.3 sq. m (1327.2 sq. ft)