



Moordown, SE18

£550,000

This charming 1930s end-of-terrace home offers superb living space and a stunning rear garden, thoughtfully designed to be light-filled, spacious, and ideal for entertaining.

Located on a sought-after road near Oxleas Woods, the property is within catchment for outstanding schools including Christchurch Primary and Harris Academy. Regular bus links provide easy access to Blackheath Village, Woolwich (Elizabeth Line & DLR), Welling, and Bexleyheath.

Features

- End Of Terrace
- Excellent Condition
- Stunning Rear Garden
- Views Of London's Skyline
- Three Bedrooms
- Off Street Parking



Moordown, SE18

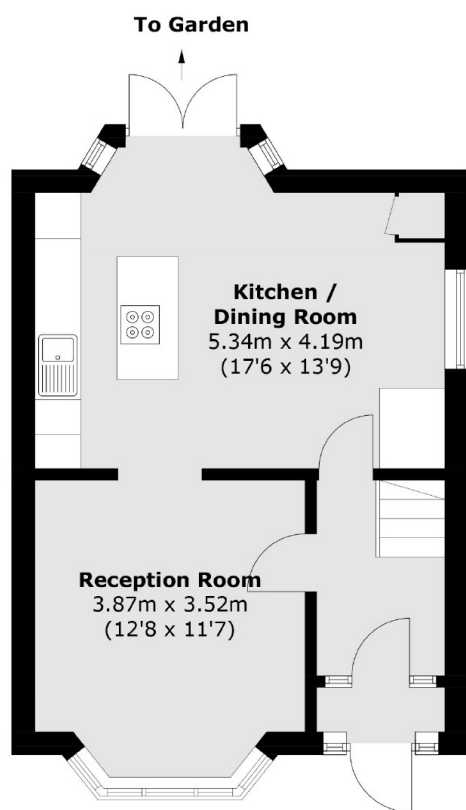
Offered with no onward chain, the property also benefits from off-street parking. A wide and welcoming entrance hall leads into a bright, open-plan kitchen/reception area overlooking the garden. The modern kitchen features a large island, sleek white cabinetry, high-quality worktops, and integrated appliances. A separate front reception room enjoys beautiful views of London's skyline.

Upstairs are three well-proportioned bedrooms, two with lovely bay windows that flood the space with natural light, and a spacious family bathroom with a walk-in shower. There is excellent potential to extend into the loft (subject to planning), following numerous precedents, to create a fourth bedroom and second bathroom.

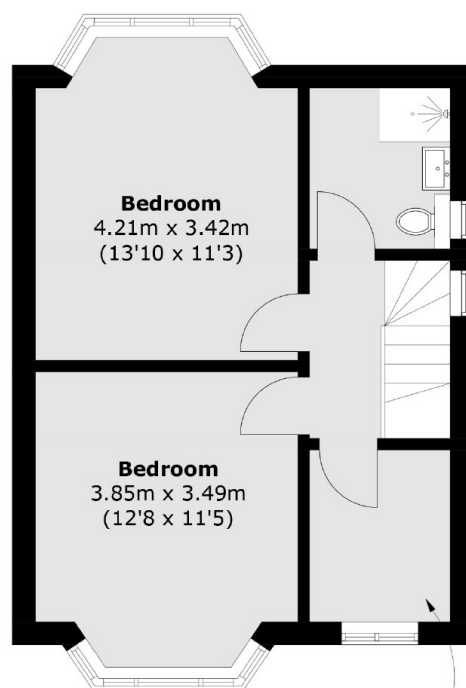
The rear garden is perfect for family life, with generous paved seating and dining areas, a large lawn, and mature borders - an ideal space for children to play.



Moordown, London, SE18



Ground Floor



First Floor

Bedroom
2.24m x 1.81m
(7'4 x 5'11)

Total area (approx.): 80.5 sq. m (866.5 sq. ft)