



Piedmont Road, SE18

£525,000

Beautifully presented Victorian terraced house on a quiet residential road. The property has been refurbished to a high standard and the current owners have retained period features which they have seamlessly integrated with modern amenities.

Minutes from Plumstead station and conveniently situated for the Elizabeth line, Woolwich Arsenal DLR and overhead lines and close to Plumstead Common.

Features

Victorian Terraced House
Three Double Bedrooms
1,215 Sq Ft
Minutes From The Elizabeth Line
Beautifully Appointed
Bespoke Sash Windows



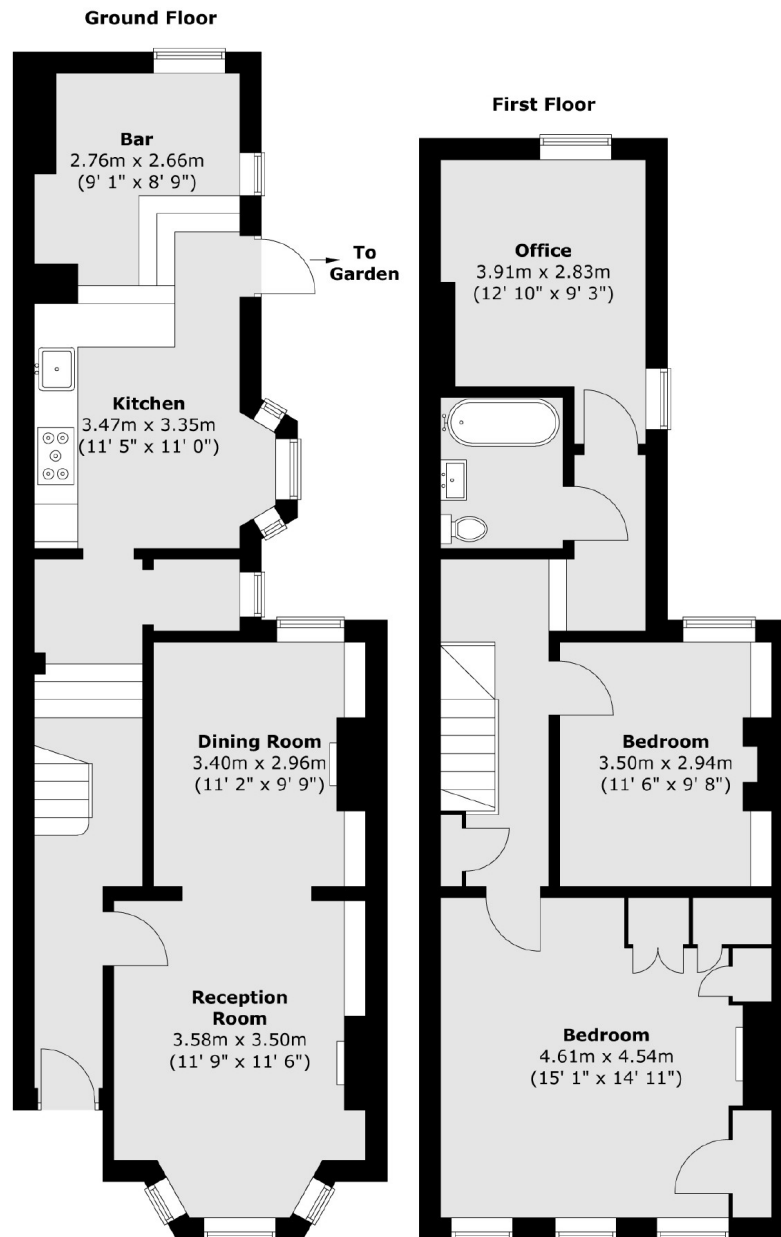
Piedmont Road, SE18

The ground floor has a bright spacious double reception room with wooden flooring and two feature fire places. The spacious hallway leads onto a large, modern fitted kitchen with contemporary cabinets and features exposed brick walls. The kitchen provides access to a west facing garden with a tranquil decking area at the rear which benefits from evening sun all afternoon and evening.

Upstairs are three bedrooms, all of which have been decorated to an impeccable standard. The master bedroom has newly fitted wardrobes that have been designed to fit in perfectly in this generous sized room. There are two other bedrooms that are well proportioned and are currently being used as a study and nursery. There is also a stylish family bathroom with an impressive roll top bath and chic tiled flooring.



Piedmont Road, London, SE18



Total area (approx.) : 112.9 sq. m (1215 sq. ft)

Dexters

Blackheath
1 Stratheden Road
London
SE3 7SX
Sales
020 8815 2200

Energy Rating: D. We aim to make our particulars both accurate and reliable. However they are not guaranteed; nor do they form part of an offer or contract. If you require clarification on any points then please contact us, especially if you're traveling some distance to view. Please note that appliances and heating systems have not been tested and therefore no warranties can be given as to their good working order.

 **RICS** | Regulated
Estate Agent
and Letting Agent

[dexters.co.uk](https://www.dexters.co.uk)