



Holywell Close, SE3

£339,995

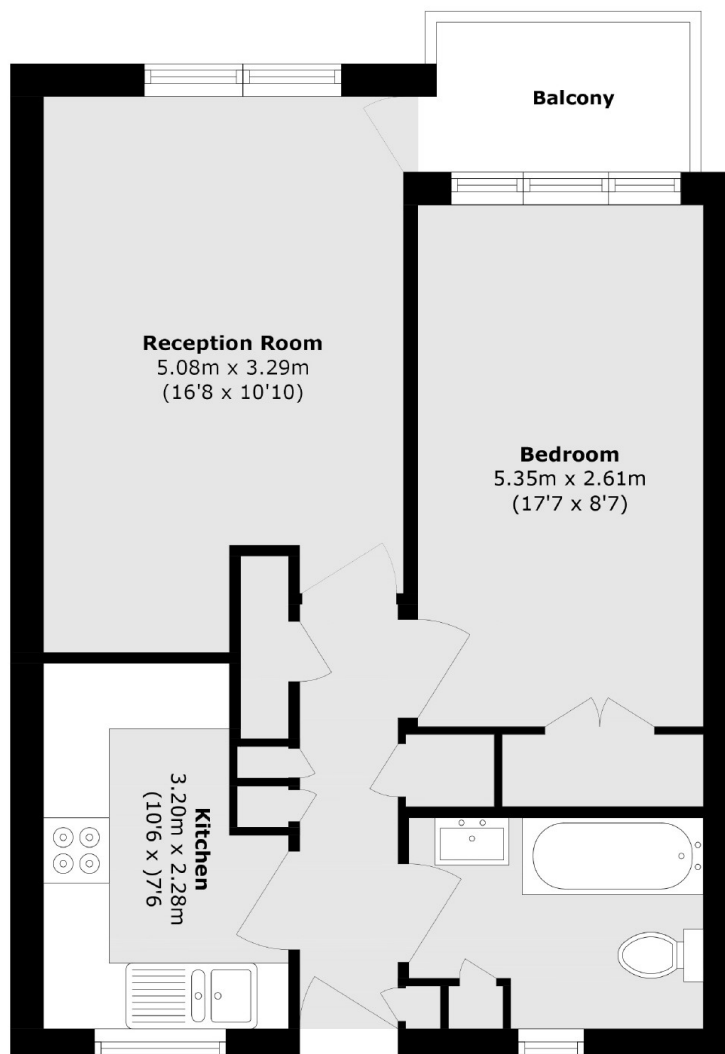
Beautifully presented purpose built one bedroom first floor flat with a West facing balcony, lots of storage and permit parking. Accommodation comprises of a good sized, bright reception room with access to the balcony, a modern fitted kitchen and bathroom and a double bedroom with built in wardrobes. Excellent first time buy.

Situated in a much sought after, quiet and tree lined road minutes from Westcombe Park Station and from bus stops for North Greenwich. Excellent location for Greenwich Park and the shops and cafés at Blackheath Royal Standard.

Features

One Bedroom First Floor Flat
Minutes From Westcombe Park
Excellent Transport Links
Beautifully Presented
Modern Kitchen & Bathroom
West Facing Balcony

Holywell Close, London, SE3



Total area (approx.): 48.6 sq. m (523.1 sq. ft)

Balcony area (approx.): 3.1 sq. m (33.3 sq. ft)

Dexters

Blackheath
1 Stratheden Road
London
SE3 7SX
Sales
020 8815 2200

Energy Rating: C. We aim to make our particulars both accurate and reliable. However they are not guaranteed; nor do they form part of an offer or contract. If you require clarification on any points then please contact us, especially if you're traveling some distance to view. Please note that appliances and heating systems have not been tested and therefore no warranties can be given as to their good working order.

 **RICS** | Regulated
Estate Agent
and Letting Agent

[dexters.co.uk](https://www.dexters.co.uk)