



Charlton Road, SE7

£320,000

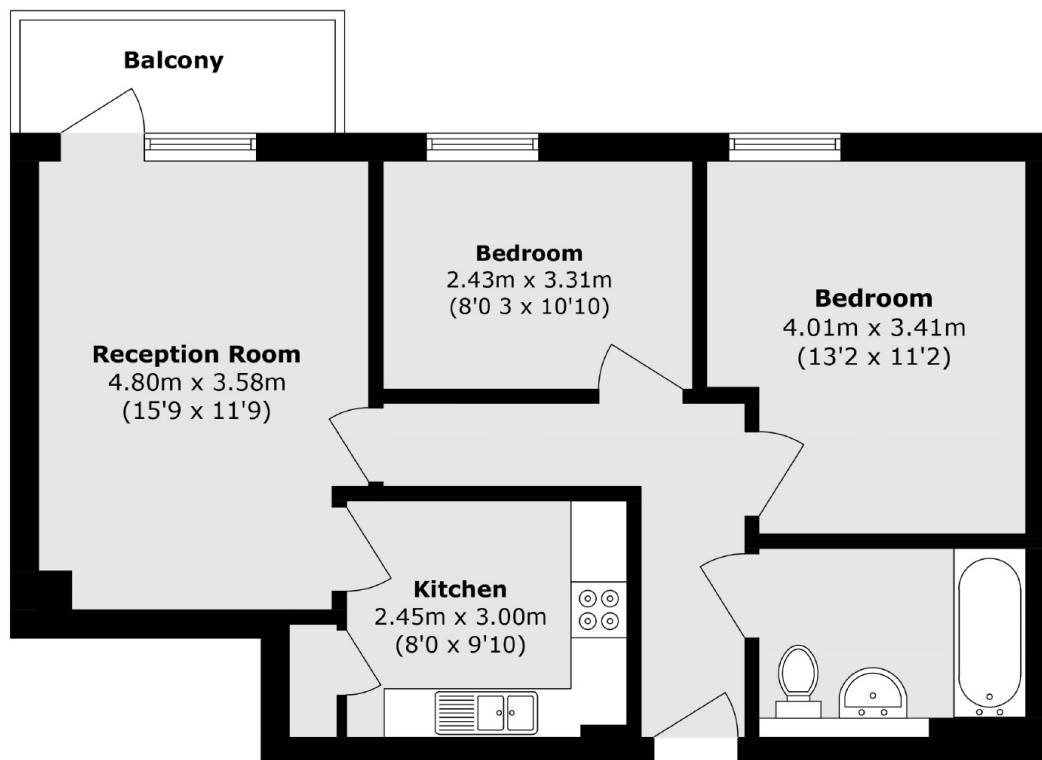
Spacious two double bedroom first floor apartment which comes to the market with the benefit of no chain. This bright and neutrally decorated property has access to a balcony with views and comes with parking. There are two double bedrooms, a large reception room and a separate kitchen and family bathroom. Would make an excellent first time buy.

Situated close to Blackheath Royal Standard and in an excellent position for Charlton Station, bus routes to North Greenwich and the Elizabeth Line.

Features

- Two Bedroom First Floor Flat
- Balcony With Views
- Parking
- Two Double Bedrooms
- Excellent Transport Links
- No Chain

Charlton Road, London, SE7



Total area (approx.): 61.3 sq. m (659.83sq. ft)

Balcony area (approx.): 4.0 sq. m (46.2 sq. ft)