



Eversley Road, SE7

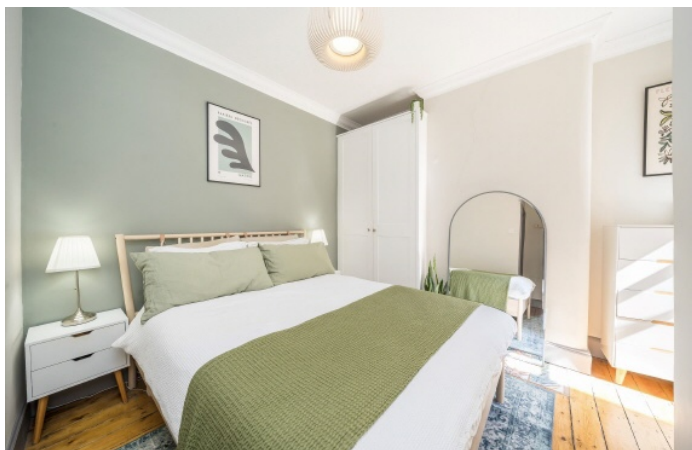
£500,000

This beautifully designed, two bedroom garden maisonette of over 700 square feet occupies the ground floor of a terraced Victorian house. It has impressive proportions, a bright front reception and a superb eat-in kitchen opening onto a delightfully sunny garden.

Eversley Road is a quiet residential street located within the Charlton Slopes. Westcombe Park is your closest station, providing frequent rail connections to London Bridge and Thameslink services to Luton via Kings Cross. Blackheath Standard is easily accessible providing an M&S Foodhall as well as an array of independent shops and cafes.

Features

- Victorian Maisonette
- Private Entrance
- Two Good-Size Bedrooms
- Private Garden
- Desirable Road
- Excellent Condition

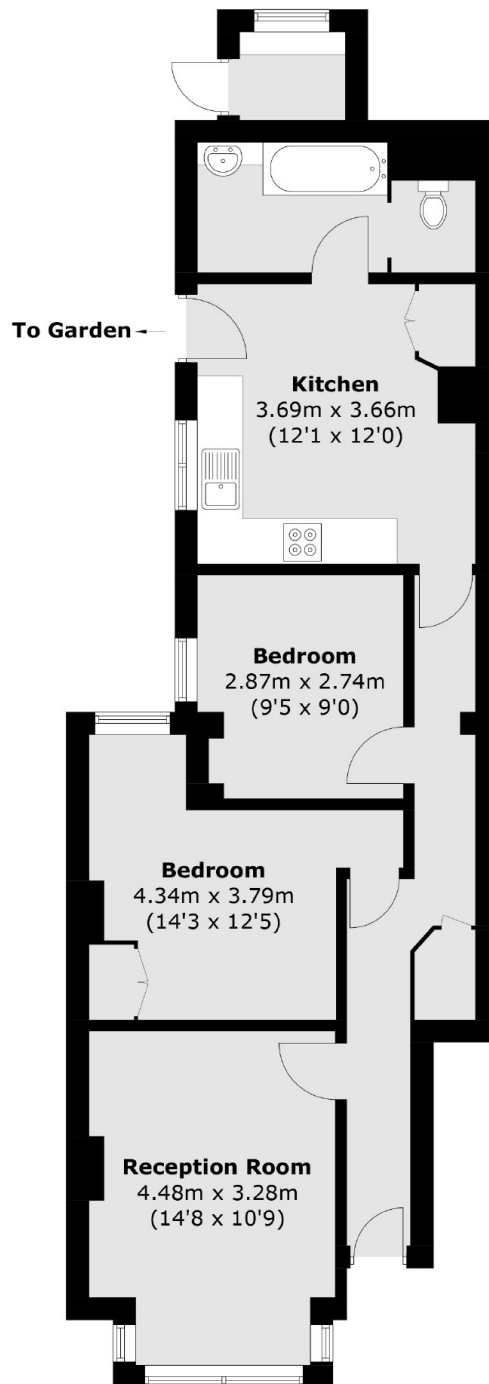


Eversley Road, SE7

Approached via a small front garden, this charming early-Victorian property has bright and spacious accommodation with a generous reception to the front, ideal for entertaining. A long entrance hall leads to the two double bedrooms, a well-equipped kitchen which features classic white gloss units and integrated appliances with space for a dining table. This in turn leads to the stylish bathroom/ WC and out to a superb, very well established and sunny garden, with a raised seating area which has a wonderfully secluded feel.



Eversley Road, London, SE7



Total area (approx.): 65.9 sq. m (709.3 sq. ft)
External Cupboard: 1.7 sq. m (18.3 sq. ft)

Dexters

Blackheath
1 Stratheden Road
London
SE3 7SX
Sales
020 8815 2200

Energy Rating: D. We aim to make our particulars both accurate and reliable. However they are not guaranteed; nor do they form part of an offer or contract. If you require clarification on any points then please contact us, especially if you're traveling some distance to view. Please note that appliances and heating systems have not been tested and therefore no warranties can be given as to their good working order.

 **RICS** | Regulated
Estate Agent
and Letting Agent

[dexters.co.uk](https://www.dexters.co.uk)