



Rolfe Terrace, SE18

£465,000

This bright and modern two bedroom, two bathroom second floor apartment has great living space and has been neutrally decorated throughout to create a fresh contemporary home with a private balcony.

Searles Court is a sought after residential development perfectly located within close proximity of Woolwich Town Centre offering a wide range of supermarkets, shops, restaurants and bars. Woolwich station provides rail links via the Elizabeth line/Crossrail, or Woolwich Arsenal station for the DLR and Thameslink.

Features

- Second Floor
- Two Bedroom
- Two Bathroom
- Private Balcony
- Excellent Condition
- Convenient Location



Rolfe Terrace, SE18

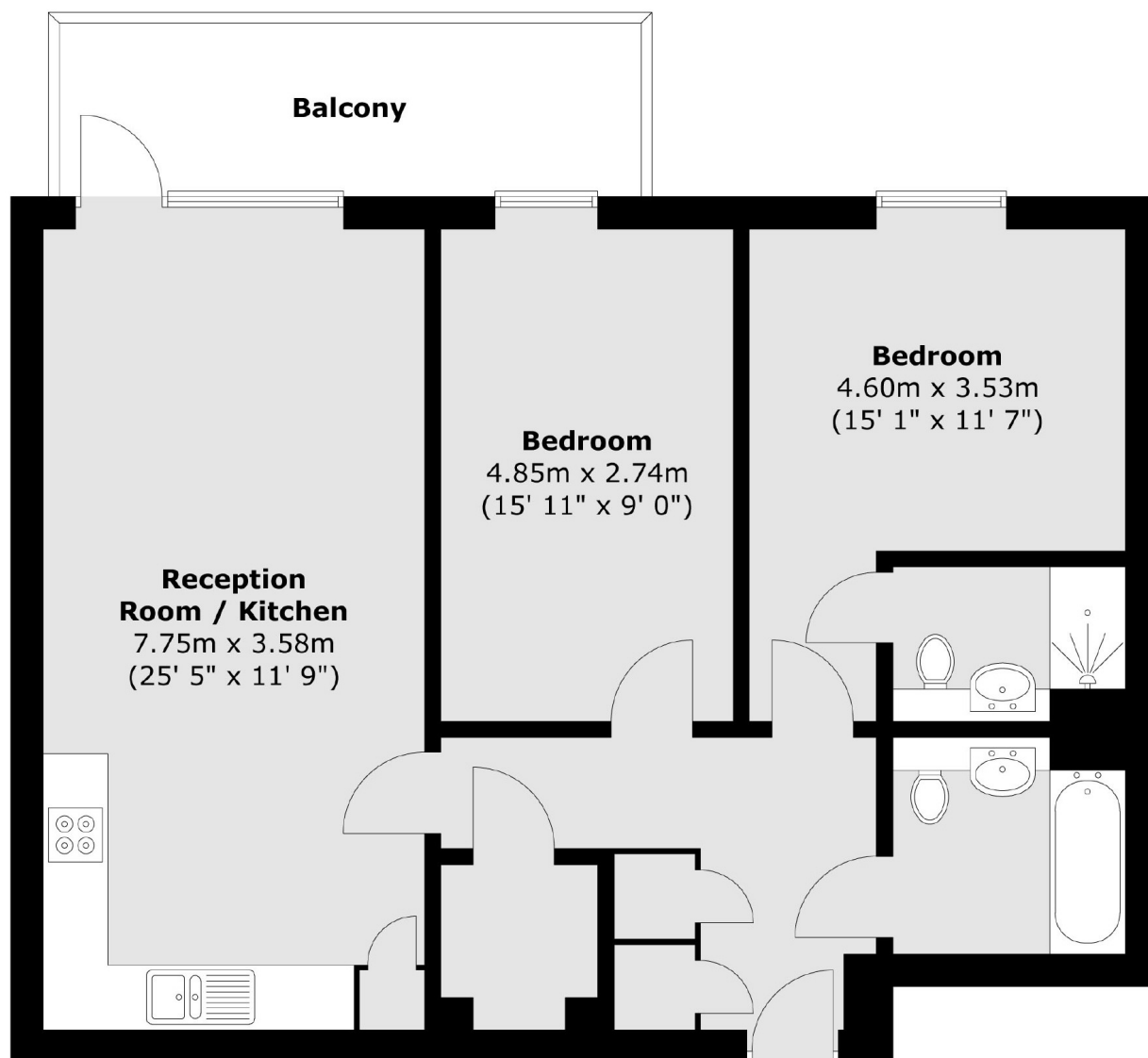
This light and spacious two bedroom apartment provides well-balanced accommodation and represents a fantastic opportunity to step onto the property ladder.

The accommodation offers a spacious 25ft open plan kitchen/reception room providing plenty of space for a dining area leading out to the private balcony. The practical nature of these properties also provides a very useful walk-in storage cupboard off the entrance hall. Two generous double bedrooms are served by way of an ensuite shower room/WC to the master bedroom and a separate modern family bathroom/WC.



Rolfe Terrace, London, SE18

Second Floor



Total area (approx.) : 75.6 sq. m (814 sq. ft)
Total balcony area (approx.) : 8.8 sq. m (95 sq. ft)

Dexters

Blackheath
1 Stratheden Road
London
SE3 7SX
Sales
020 8815 2200

Energy Rating: B. We aim to make our particulars both accurate and reliable. However they are not guaranteed; nor do they form part of an offer or contract. If you require clarification on any points then please contact us, especially if you're traveling some distance to view. Please note that appliances and heating systems have not been tested and therefore no warranties can be given as to their good working order.

 **RICS** | Regulated
Estate Agent
and Letting Agent

[dexters.co.uk](https://www.dexters.co.uk)