



Furzefield Road, SE3

£650,000

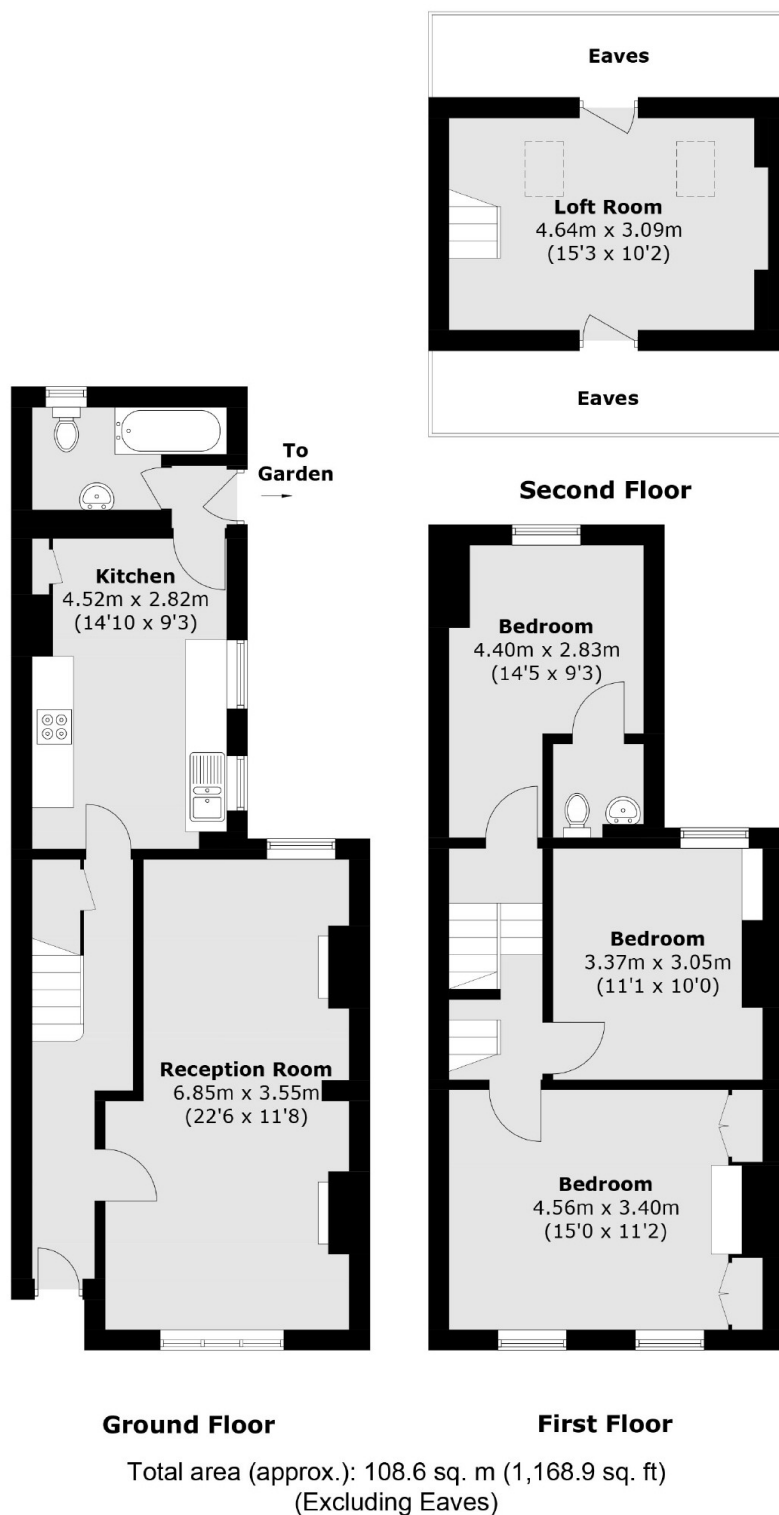
Three Bedroom Edwardian terraced house which offers excellent living accommodation, period features and comes with the benefit of no chain. Accommodation comprises of a through reception with original floors and feature fireplaces. There is a large kitchen with space to eat, ample storage and work surface space. There is a ground floor bathroom. Upstairs are three double bedrooms, the master with fitted floor to ceiling wardrobes and an upstairs w/c. The loft has been insulated and has a skylight. There is a courtyard garden to the rear and a garden to the front.

Situated in a much sought after conservation area in a quiet road and within catchment area of three outstanding primary schools. The property is well situated for transport links to Central London and for bus routes to Woolwich for the Elizabeth Line.

Features

- Three Bedroom Terraced House
- Sought After Conservation Area
- Large Kitchen/Dining Room
- Period Features Throughout
- Catchment Area For Schools
- No Chain

Furzefield Road, London, SE3



Dexters

Blackheath
1 Stratheden Road
London
SE3 7SX
Sales
020 8815 2200

Energy Rating: D. We aim to make our particulars both accurate and reliable. However they are not guaranteed; nor do they form part of an offer or contract. If you require clarification on any points then please contact us, especially if you're traveling some distance to view. Please note that appliances and heating systems have not been tested and therefore no warranties can be given as to their good working order.

 **RICS** | Regulated
Estate Agent
and Letting Agent

[dexters.co.uk](https://www.dexters.co.uk)