



## Moy Lane, SE18

### £450,000

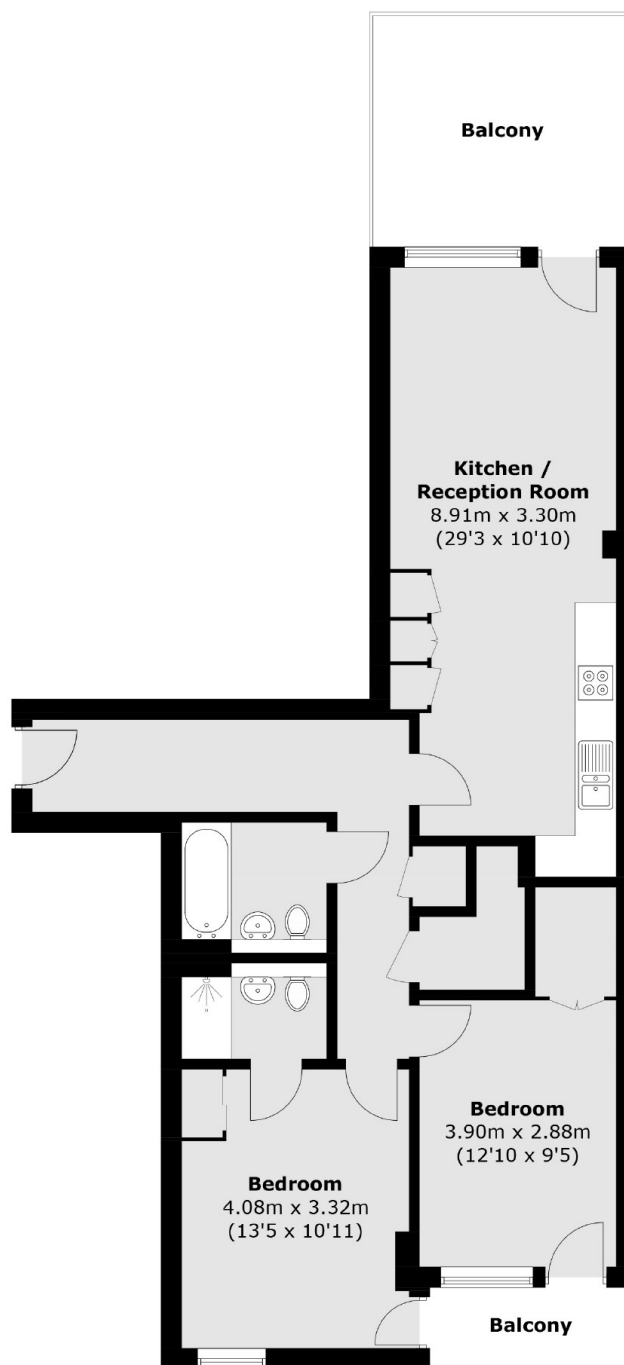
Spacious two double bedroom first floor apartment which is immaculately presented, tastefully decorated and has the benefit of both a terrace and balcony. The property has a large open plan reception room/kitchen which leads to a South facing terrace, the master bedroom has an en-suite shower room and the second double bedroom has access to a balcony. There is on-site concierge and easy access to transport.

Situated in a quiet residential development minutes to the centre of Woolwich for the DLR and overhead station plus all the benefits of the town centre. The Elizabeth line is within close proximity and the property is 15 minutes to Canary Wharf and 25 minutes to Liverpool street.

### Features

- Two Bedroom Apartment
- Terrace & Balcony
- Minutes From DLR & Station
- Close To Elizabeth Line & Shops
- Large Reception
- Two Bathrooms

# Moy Lane, London, SE18



Total area (approx.): 79.9 sq. m (860.0 sq. ft)  
Balcony: 16.2 sq. m (174.4 sq. ft)

## Dexters

Blackheath  
1 Stratheden Road  
London  
SE3 7SX  
Sales  
020 8815 2200

Energy Rating: B. We aim to make our particulars both accurate and reliable. However they are not guaranteed; nor do they form part of an offer or contract. If you require clarification on any points then please contact us, especially if you're traveling some distance to view. Please note that appliances and heating systems have not been tested and therefore no warranties can be given as to their good working order.

 **RICS** | Regulated  
Estate Agent  
and Letting Agent

[dexters.co.uk](https://www.dexters.co.uk)