



Westcombe Park Road, SE3

£315,000

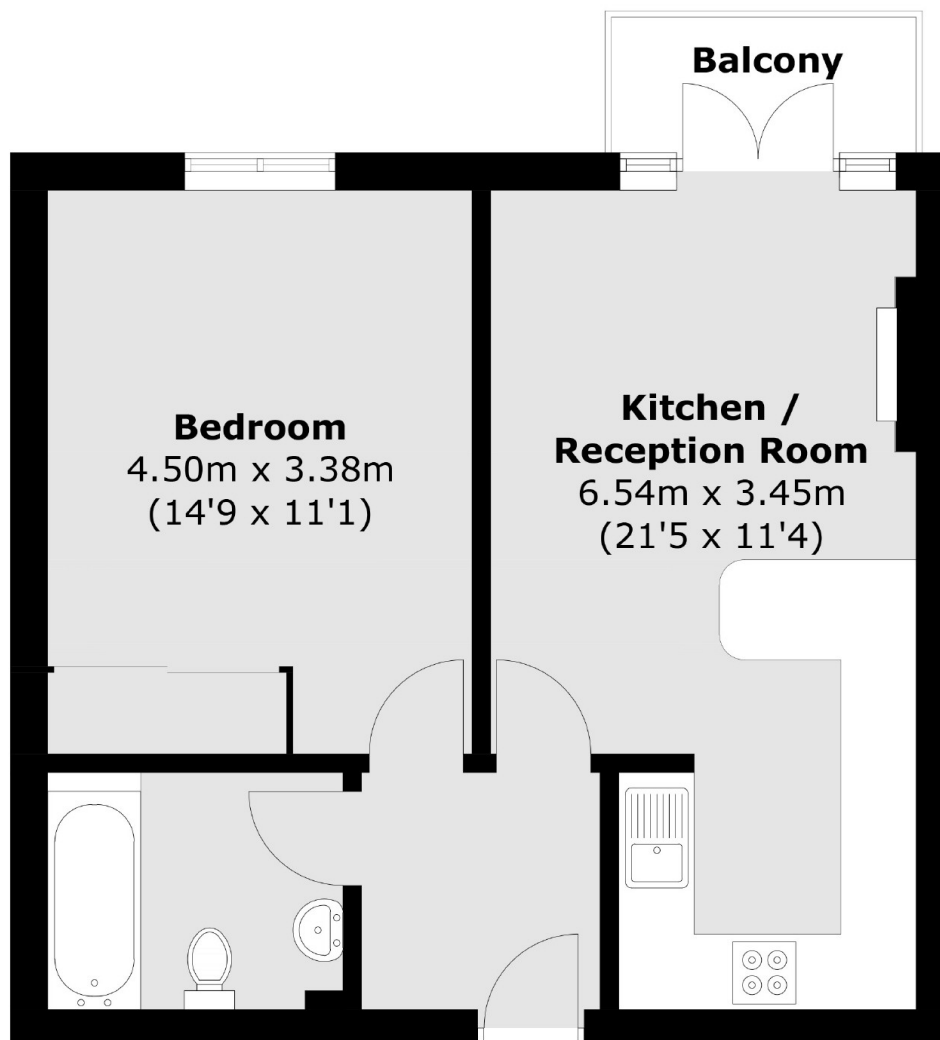
Well appointed one bedroom ground floor retirement apartment situated in this sought after development in Westcombe Park. This well maintained block has a lovely South facing communal garden, a residents lounge where there are coffee mornings held, and a communal laundry room. The block also comes with residents parking. This apartment has a modern kitchen which is open plan to a bright and spacious reception room. There is a double bedroom with a floor to ceiling fitted wardrobe and a separate bathroom. Offered with no chain.

In the heart of Westcombe Park, minutes from shops and amenities. Excellent location for bus routes to North Greenwich, Lewisham and Central London. Close to Greenwich park and Blackheath.

Features

- Well Appointed Retirement Flat
- Private Balcony
- Stunning Grounds
- Excellent Location For Shops & Transport
- Over 60's Only
- No Chain

Westcombe Park Road, London, SE3



Total area (approx.): 45.5 sq. m (489.7 sq. ft)
Balcony area : 2.6 sq. m (27.9 sq. ft)