



Seren Park Gardens, SE3
£1,150,000

Dexters



Seren Park Gardens, SE3

Stunning three double bedroom penthouse apartment measuring over 1,000 Sq Ft, which comes with over 2,000 Sq Ft private roof terrace that has far reaching views of London's landmarks and city. Refurbished throughout to a high standard by the current owners, this bright and spacious property offers excellent and versatile space for families and professionals.

The reception area, ideal for entertaining with both dining and seating space has access to the terrace and is open plan to a well appointed, high specification kitchen with integrated appliances and lots of storage.

There are two newly fitted contemporary bathrooms and three bedrooms, two with access to the terrace. The property has lift access and underground parking. Can be offered with no chain.

Situated in a quiet cul-de-sac minutes from Maze Hill Station, Royal Greenwich Park and to the shops and restaurants that Greenwich centre has to offer. The property is also close to popular primary and secondary schools.

Features

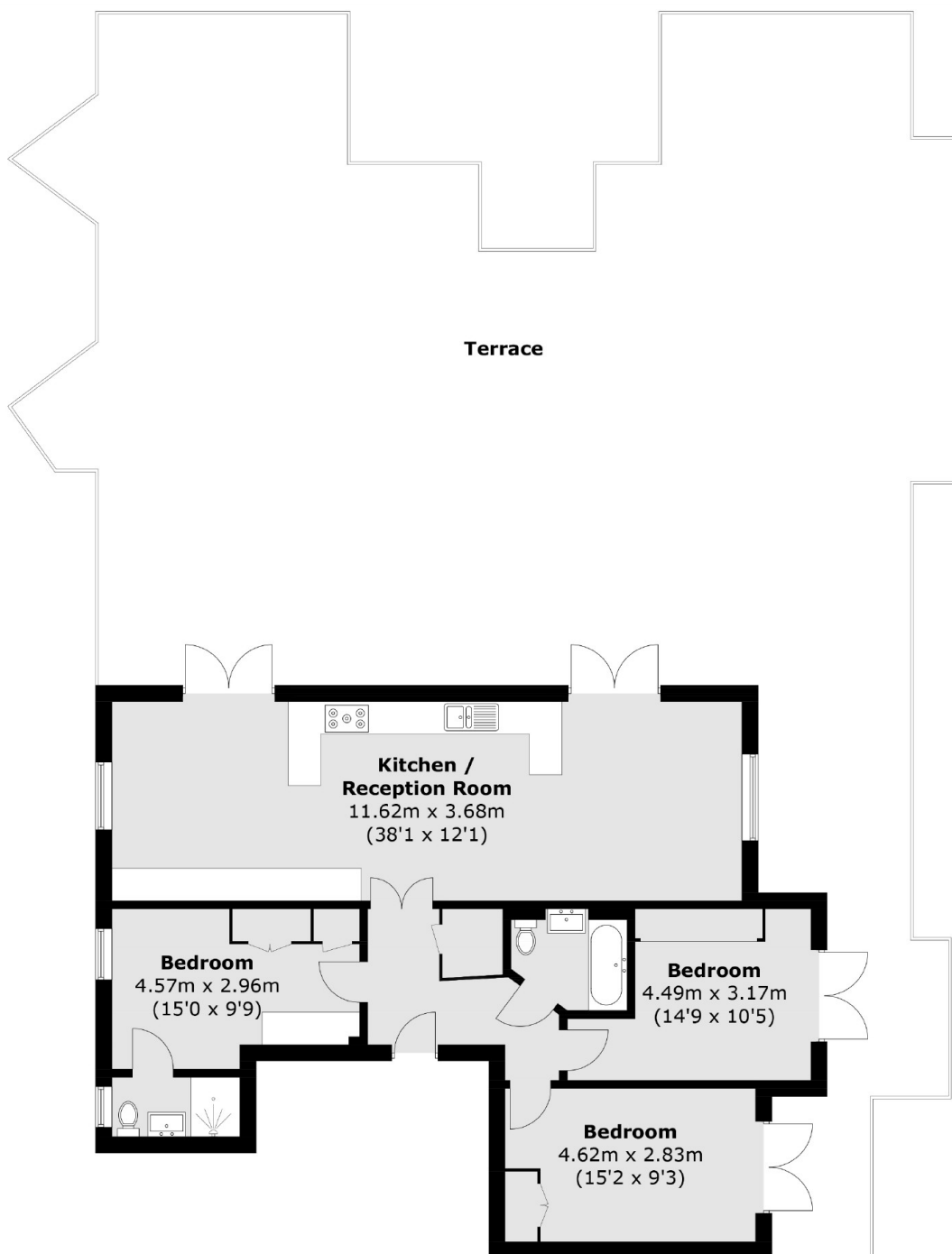
Stunning Penthouse Apartment
Large Roof Terrace With Views
Across London
Beautifully Appointed
Throughout
Three Bedrooms







Seren Park Gardens, London, SE3



Total area (approx.): 99.5 sq. m (1071.0 sq. ft)
Terrace: 199.7 sq. m (2149.5 sq. ft)

Dexters

Blackheath
1 Stratheden Road
London
SE3 7SX
Sales
020 8815 2200

Energy Rating: C. We aim to make our particulars both accurate and reliable. However they are not guaranteed; nor do they form part of an offer or contract. If you require clarification on any points then please contact us, especially if you're traveling some distance to view. Please note that appliances and heating systems have not been tested and therefore no warranties can be given as to their good working order.

 **RICS** | Regulated
Estate Agent
and Letting Agent

dexters.co.uk