



Vanbrugh Park, SE3

£700,000

Two/three bedroom conversion flat which occupies the entire first floor of this detached Victorian Villa. The property benefits from a private entrance door and this beautifully maintained house is divided into four flats and each property has a share of the freehold.

Sitting on the edge of Blackheath and minutes from the Royal Standard for its shops and cafés, Maze Hill and Westcombe Park Stations and adjacent to Greenwich Park.

Features

- Stunning Heath Facing Flat
- Beautiful Views Across Blackheath
- Large Kitchen/Breakfast Room
- Own Section Of Garden
- Minutes From Station & Shops
- Minutes From Greenwich Park



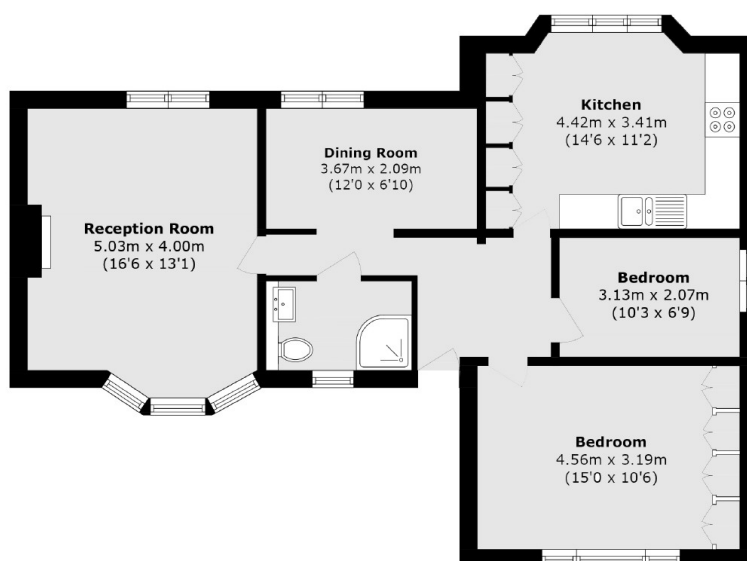
Vanbrugh Park, SE3

The current owners have recently refurbished the property and have re-fitted the kitchen to include integrated appliances and lots of storage space. There is dining space and the room has uninterrupted views across the Heath. There is a large reception room with dual aspect windows and a separate study room which could also be used as a dining room.

The master bedroom has floor to ceiling fitted wardrobes and over looks the rear garden and there is a second good sized single bedroom. The property has its private section of the garden.



Vanbrugh Park, London, SE3



Total area (approx.): 76.5 sq. m (823.4 sq. ft)