



Wellington Gardens, SE7

£800,000

Spacious end of terraced house situated on the corner of a much sought after road, offering period features, large rooms and a unique layout which must be viewed to appreciate this property.

Situated minutes from Charlton Station for Thameslink trains into the City and to Woolwich for the Elizabeth Line and within easy access of the Jubilee Line. Wellington Gardens is a quiet residential road which is also well positioned for popular primary schools, shops, superstores and parks.

Features

- Stunning End Of Terraced House
- Minutes From Charlton Station
- Period Features Throughout
- Two Large Reception Rooms
- Three Double Bedrooms
- Two Bathrooms



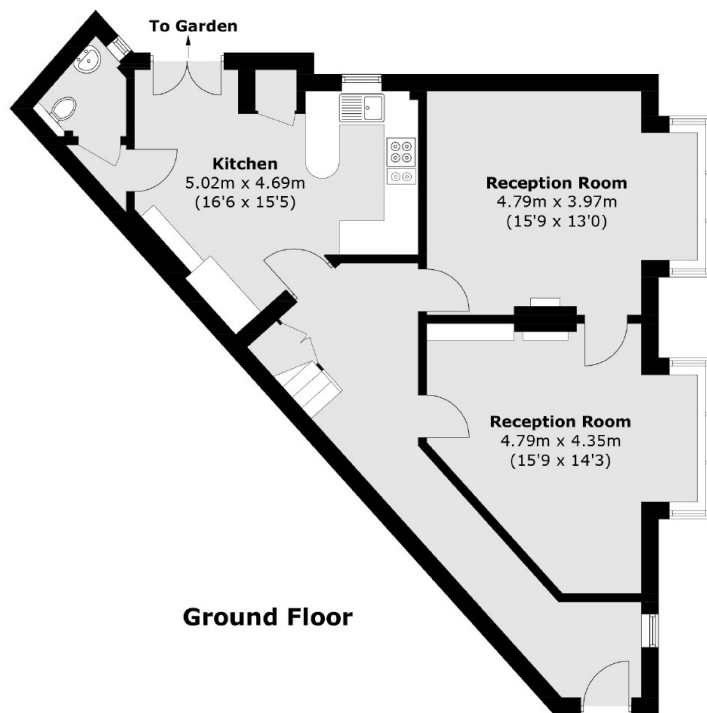
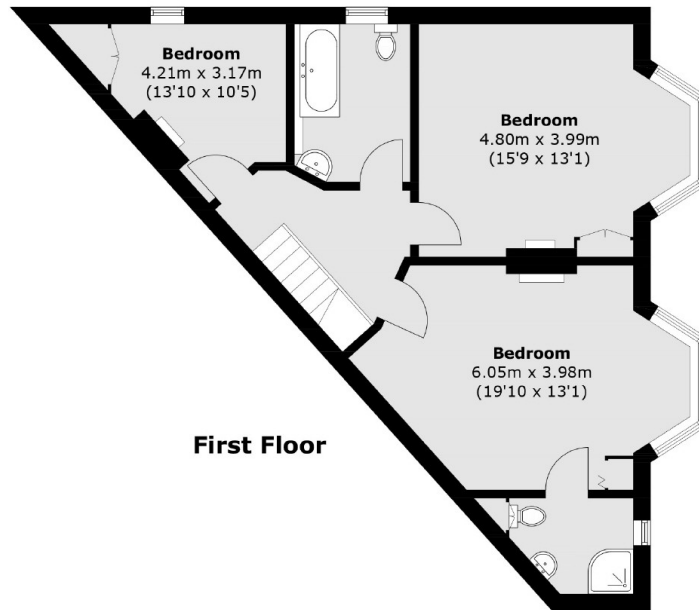
Wellington Gardens, SE7

You enter into a large hallway which has original cornicing and polished wooden floors, there are two large reception rooms with high ceilings and feature fireplaces, plus a kitchen/breakfast room with space to dine and access to a ground floor cloakroom/utility room.

Upstairs are three excellent sized bedrooms, the master bedroom with a large en-suite and a separate family bathroom. The garden benefits from a South East aspect and has side access.



Wellington Gardens, London, SE7



Total area (approx.): 136.5 sq. m (1,469.3 sq. ft)