



**Mycenae Road, SE3**

**£1,495,000**

**Dexters**



## Mycenae Road, SE3

Detached and well presented four double bedroom house situated in a much sought after location, which has been in the current vendors' ownership for the last forty years and has provided a much loved and spacious family home.

The property is neutrally decorated throughout and provides excellent living space with two large reception rooms, the room to the rear with the benefit of an added conservatory which has views over the garden. There is an extended kitchen with space for a table and access to the side, and the large entrance hall has a storage space and ground floor cloakroom.

There are four double bedrooms and a family bathroom and w/c to the first floor, plus loft space which could be converted (STPP). Outside is a beautiful rear garden, measuring over 100 feet and backing onto Woodland. There is a driveway for two cars and a large front garden.

Mycenae Road is a much sought after road within minutes of Westcombe Park station, the shops and amenities of Blackheath Royal Standard, and is within easy access for nearby buses to North Greenwich. Quiet and residential, within short distance of Greenwich park and outstanding secondary and primary schools.

### Features

- Detached Four Bedroom House
- Two Reception Rooms
- Stunning Garden
- Minutes From Westcombe Park Station
- Driveway For Two Cars







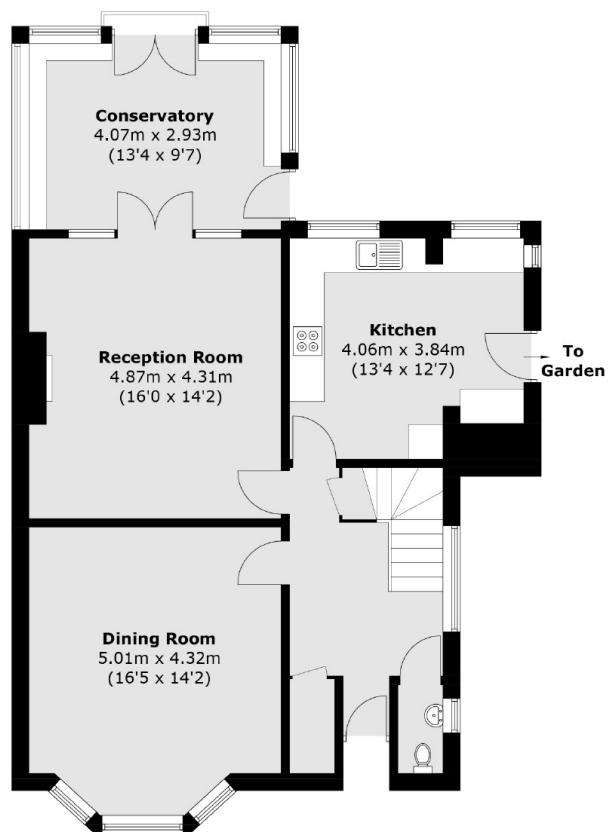




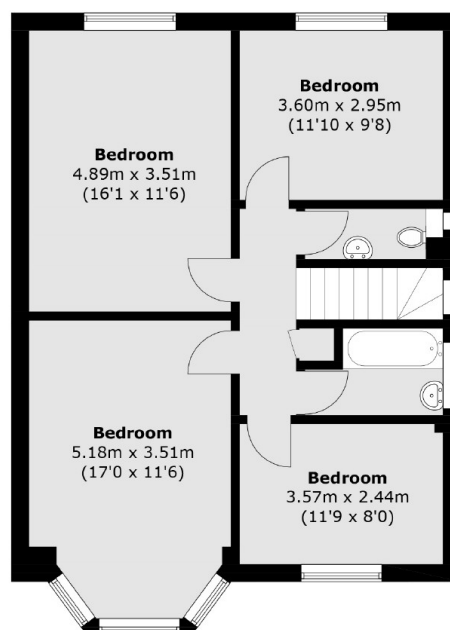




# Mycenae Road, London, SE3



**Ground Floor**



**First Floor**

Total area (approx.): 156.3 sq. m (1,682.4 sq. ft)