



Merriman Road, SE3

£750,000

Fabulous three bedroom semi detached house which has been extended to the rear and comes with a driveway, large garden and is an excellent family home.

Situated in a popular residential road which is close to local shops, excellent transport links and within easy reach of Blackheath Village and Greenwich Park. Within catchment area of Leigh Academy secondary school.

Features

- Extended Three Bedroom Semi
- Large Kitchen/Reception Room
- Two Bathrooms
- Garden Room/Office
- Close To Leigh Academy
- Good Transport Links



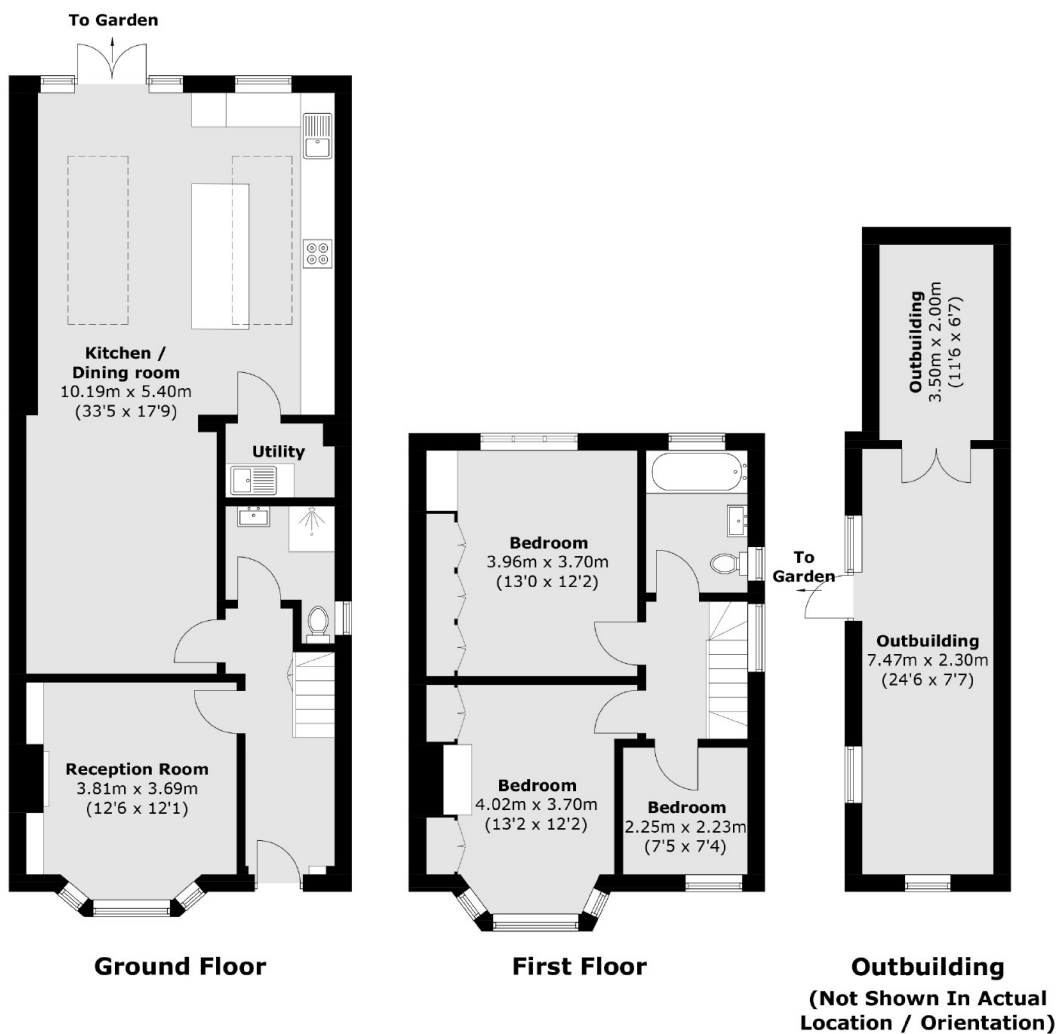
Merriman Road, SE3

There is a reception room to the front which the current owners use as a guest bedroom, as the ground floor also benefits from a second shower room. The rear reception and kitchen have been extended and now provides a large family room with a modern kitchen with built in appliances, an island unit, plenty of space for living and dining and views over the rear garden.

Upstairs are three bedrooms and a family bathroom, there is loft space which could be converted to provide a further bedroom. The large rear garden has a brick built outhouse which is currently used as an office and a gym.



Merriman Road, London, SE3



Total area (approx.): 118.5 sq. m (1,275.5 sq. ft)
Outbuilding: 24.5 sq. m (263.7 sq. ft)