



Mayhill Road, SE7

£950,000

Dexters



Mayhill Road, SE7

Beautifully presented four double bedroom terraced house extended to both ground floor and into the loft to provide excellent living space in this stunning family home. The property comes with a driveway and side access and has the benefit of no chain.

The ground floor provides two spacious and bright reception rooms and a large fitted kitchen with a separate and handy utility room and a ground floor toilet. The first floor has three double bedrooms which are larger than most on the road due to the side access and there is a stunning first floor bathroom.

The loft has been converted to a beautiful master suite with bi-folding doors with views overlooking the city, has an en-suite shower room and plenty of space for storage and working from home. The rear garden is landscaped and West facing with the benefit of side access.

Located on the popular Charlton Slopes, in a wide, sought after road, within the catchment area of popular primary schools, an outstanding secondary school and nurseries. There are excellent transport links to the City and Canary Wharf with regular buses for North Greenwich station and within 0.5 miles of Westcombe Park Station. This property is also a short walk away from Blackheath Standard and Greenwich Park.

Features

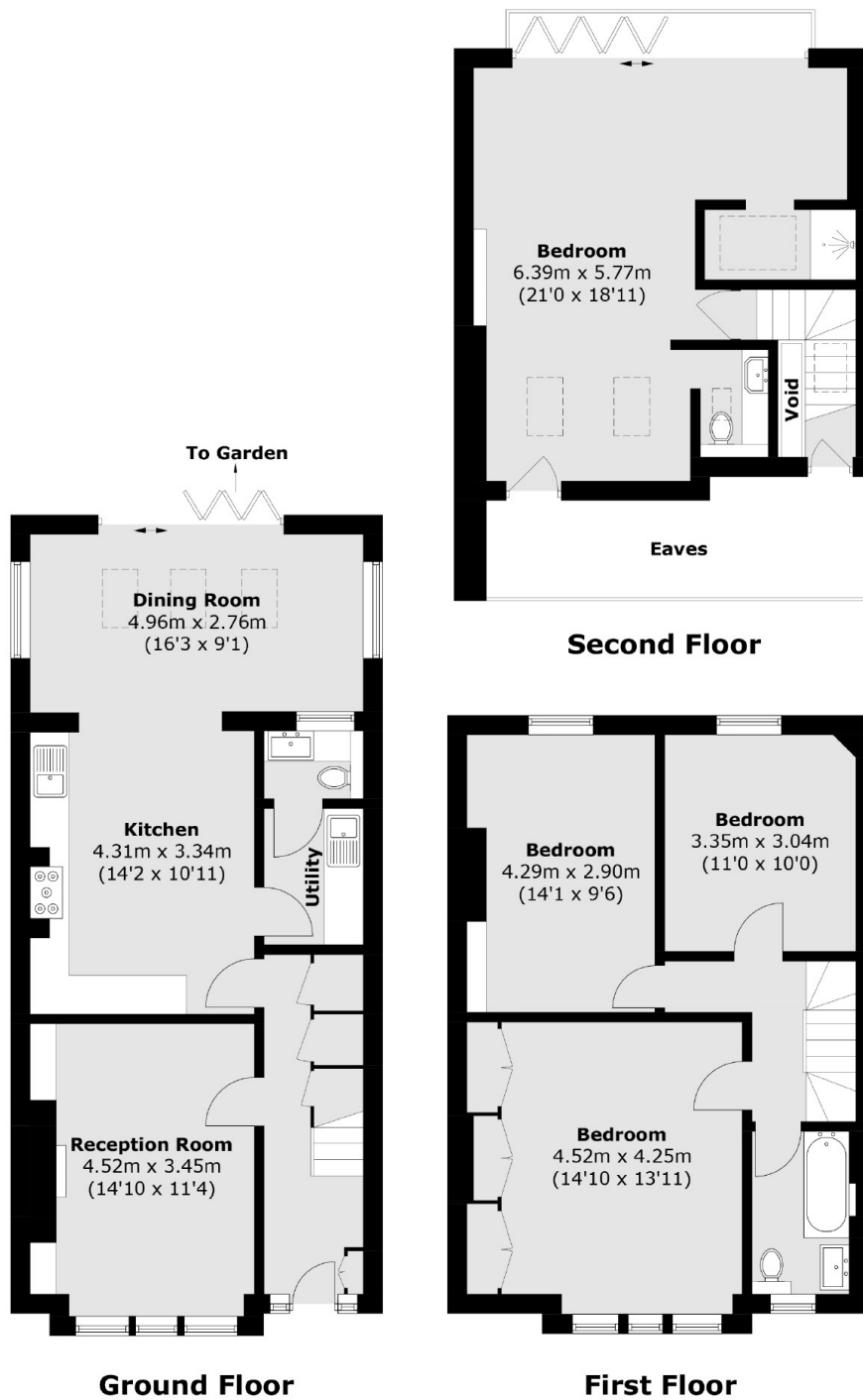
- Four Double Bedrooms
- Beautifully Presented Throughout
- Much Sought After Road
- Driveway
- Extended To Rear & Side







Mayhill Road, London, SE7



Total area (approx.): 152.1 sq. m (1,637.2 sq. ft)