



Dinsdale Road, SE3

£999,995

Spacious four double bedroom Victorian terraced family home, situated in a quiet popular road and close to schools and stations. Accommodation comprises of a large through reception room with period fireplaces and cornicing. A kitchen/breakfast room with space for a large dining table and access to the cellar and rear garden.

Situated on a quiet residential road and minutes from Westcombe Park and Maze Hill Stations and in an excellent position for schools. The shops and restaurants in East Greenwich are just a short walk away, as is Greenwich Royal Park and Observatory. North Greenwich Jubilee Line and the DLR at Cutty Sark are also within easy access.

Features

- Four Double Bedroom House
- Two Bathrooms
- Minutes From Maze Hill Station
- Close To Greenwich Park
- Period Features Throughout
- No Chain



Dinsdale Road, SE3

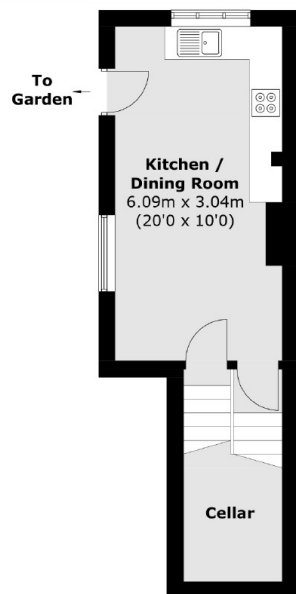
The first floor is split level and has two double bedrooms and a spacious family bathroom, with a freestanding bath and separate double shower.

The second floor has a further double bedroom which comes with plenty of storage and space to fit an en-suite shower room (STPP) and the top floor has a large fourth bedroom/master bedroom with stunning views across to Canary Wharf and the City, there is also a second shower room.

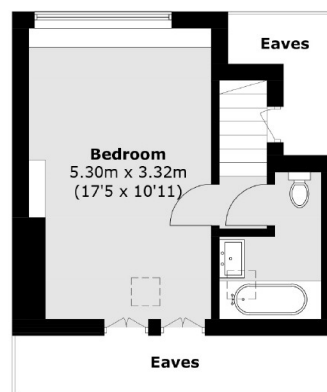
This is a fabulous family home and should be viewed to appreciate the space and potential it has to offer.



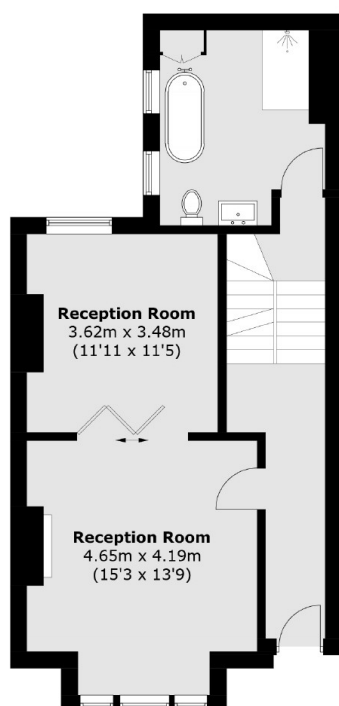
Dinsdale Road, London, SE3



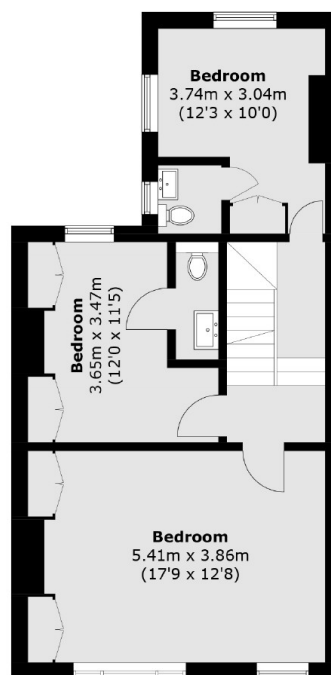
Lower Ground Floor



Second Floor



Ground Floor



First Floor

Total area (approx.): 158.4 sq. m (1,705.0 sq. ft)
(Excluding Eaves)

Dexters

Blackheath
1 Stratheden Road
London
SE3 7SX
Sales
020 8815 2200

Energy Rating: E. We aim to make our particulars both accurate and reliable. However they are not guaranteed; nor do they form part of an offer or contract. If you require clarification on any points then please contact us, especially if you're traveling some distance to view. Please note that appliances and heating systems have not been tested and therefore no warranties can be given as to their good working order.

 **RICS** | Regulated
Estate Agent
and Letting Agent

dexters.co.uk