



## Reynolds Place, SE3

£650,000

A pretty two/three bedroom brick fronted terraced house which offers versatile living space and is well presented throughout. Arranged over three floors the property is neutrally decorated, has a large rear garden and is an ideal family home within the Rectory Fields Conservation Area. Offered to the market with no onward chain.

Situated in a much sought after road, close to the shops, cafés and amenities at Blackheath Royal Standard and within close proximity of Leigh Academy and two outstanding primary schools. Westcombe Park Station is nearby and there are regular buses to North Greenwich for the Jubilee line.

### Features

- Sought After Road
- Potential To Extend (STPP)
- Three Good Sized Bedrooms
- Close To Shops & Transport
- Good Decorative Order
- No Chain





## Reynolds Place, SE3

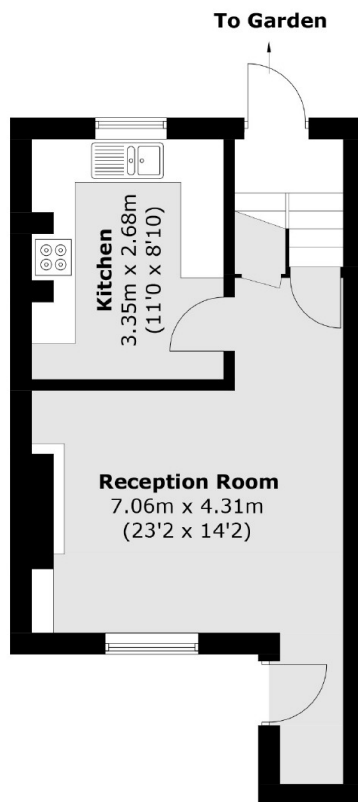
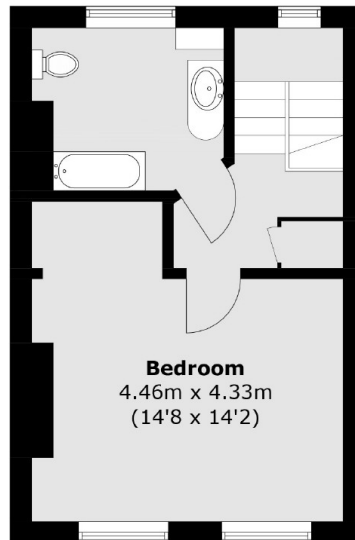
Entered through a small front garden the property has been cleverly designed to provide a perfect layout for a young family; currently arranged as two receptions and two bedrooms, the accommodation can be easily adapted for three bedrooms, with two generous bedrooms on the ground floor along with a master bedroom and stylish family bathroom on the first.

The lower ground floor benefits from a second entrance opening directly into a spacious family/ dining room with a fireplace, providing ample space for sitting and dining, plus a separate modern kitchen with integrated appliances. The garden is an excellent size and is mainly laid to lawn with a paved dining area. It is east facing, nicely secluded and receives plenty of sun.

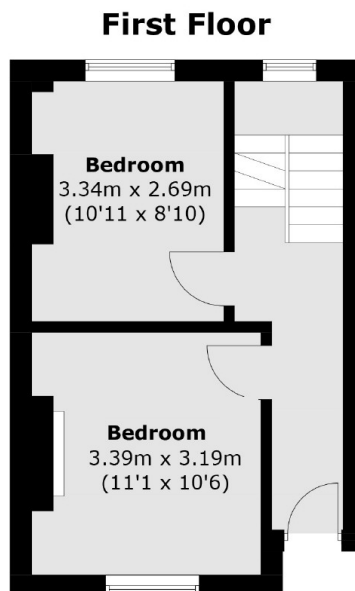




# Reynolds Place, London, SE3



**Lower Ground Floor**



**Ground Floor**

Total area (approx.): 90.8 sq. m (977.4 sq. ft)