

Windsor Square, SE18

£690,000

Stunning two double bedroom seventh floor flat situated in the prestigious Berkeley Woolwich Arsenal development in this partly converted contemporary building.

Situated in the Royal Arsenal at Woolwich, minutes from the Elizabeth Line and close to the DLR at Woolwich. This sought after development has cafés, restaurants, shops and supermarkets on-site.

Features

Stunning Seventh Floor Flat
Beautifully Appointed
Parking Space
Gym, Swimming Pool &
Concierge
Two Double Bedrooms
Two Bathrooms



Windsor Square, SE18

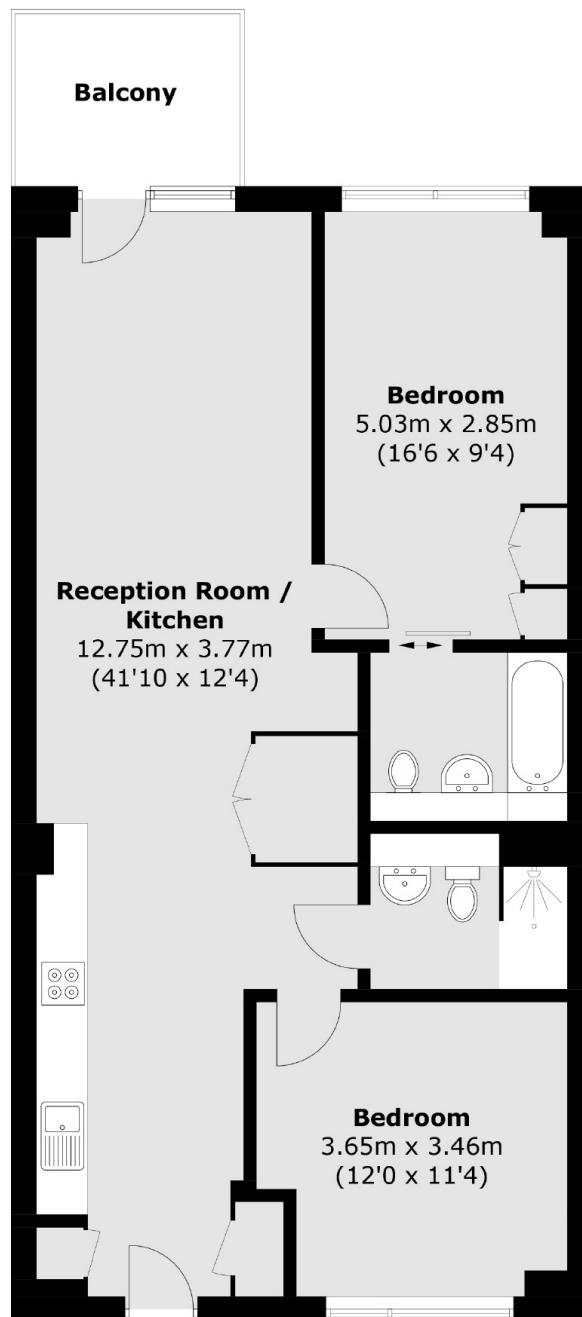
Built just two years ago, the developer's attention to detail throughout the property means that there are high specification fittings and appliances, and the flat has a high end finish.

The property offers excellent living space which is open plan to a fitted kitchen with built in appliances and lots of storage.

There are two double bedrooms, the master with an en-suite shower room, plus a family bathroom. This property comes with a parking space, 24 hour concierge and access to a well equipped gym and beautiful pool and spa.



Windsor Square, London, SE18



Total area (approx.): 79.7 sq. m (857.9 sq. ft)
Balcony : 5.3 sq. m (57.0 sq. ft)

Dexters

Blackheath
1 Stratheden Road
London
SE3 7SX
Sales
020 8815 2200

Energy Rating: B. We aim to make our particulars both accurate and reliable. However they are not guaranteed; nor do they form part of an offer or contract. If you require clarification on any points then please contact us, especially if you're traveling some distance to view. Please note that appliances and heating systems have not been tested and therefore no warranties can be given as to their good working order.

 **RICS** | Regulated
Estate Agent
and Letting Agent

[dexters.co.uk](https://www.dexters.co.uk)