



## Eliot Hill, SE13

### £500,000

Stunning ground floor garden flat which must be viewed to appreciate the space, condition and features that this beautiful apartment has to offer,

Situated in a much sought after road, opposite Blackheath and minutes from Lewisham DLR and station with regular trains in the Central London. Blackheath Village is within 0.5 of a mile and Historic Greenwich centre is close by.

### Features

OIEO £500,000  
Beautiful South Facing Garden  
Flat  
Much Sought After location  
Minute's From Station And DLR  
Stunning Living Area  
Adjacent To The Heath





## Eliot Hill, SE13

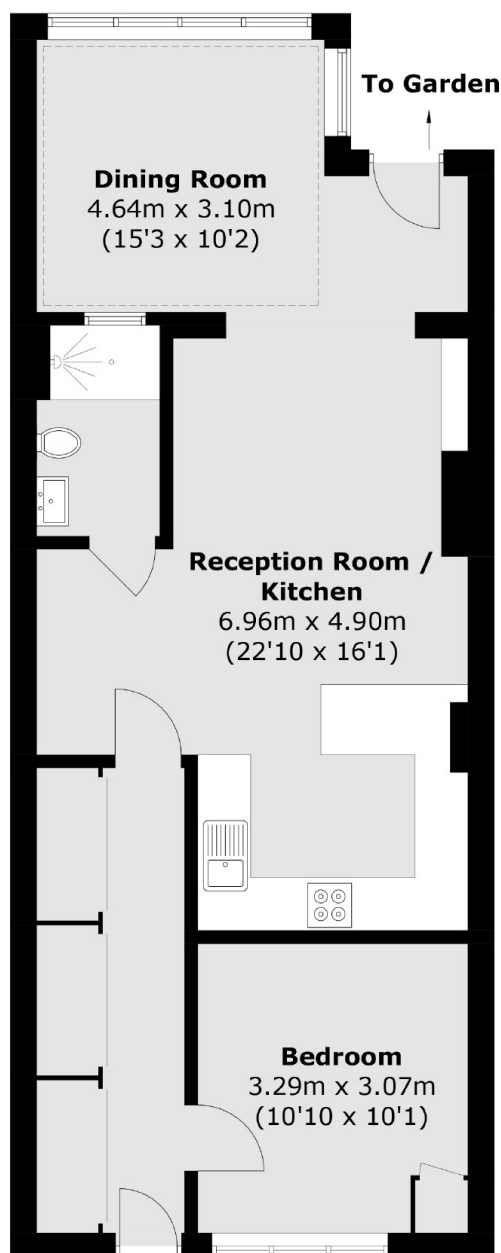
The property has excellent living space and was extended to the rear to provide a larger reception room and has views over the South facing rear garden. The kitchen is fully fitted and well appointed with integrated appliances and is open plan to the reception room.

There is plenty of storage throughout the property, including floor to ceiling cupboards through the long hallway. Other benefits include a driveway with sole use for this property and access to a private south facing patio, which leads onto a large South facing garden.





# Eliot Hill, London, SE13



Total area (approx.): 64.2 sq. m (691.0 sq. ft)

## Dexters

Blackheath  
1 Stratheden Parade  
London  
SE3 7SX  
Sales  
020 8815 2200

Energy Rating: . We aim to make our particulars both accurate and reliable. However they are not guaranteed; nor do they form part of an offer or contract. If you require clarification on any points then please contact us, especially if you're traveling some distance to view. Please note that appliances and heating systems have not been tested and therefore no warranties can be given as to their good working order.

 **RICS** | Regulated  
Estate Agent  
and Letting Agent

dexters.co.uk