



Shooters Hill Road, SE3

£425,000

Beautifully appointed, spacious one bedroom garden flat which benefits from direct access to a patio and garden and a private entrance. Measuring 713 sq ft, this excellent property has period feature's, and comes with plenty of storage and a parking space to the front.

Situated minutes from Blackheath Royal Standard for it's shops, cafés and amenities. Within 0.7 miles of Blackheath Village and station, and close to bus routes to North Greenwich Jubilee line.

Features

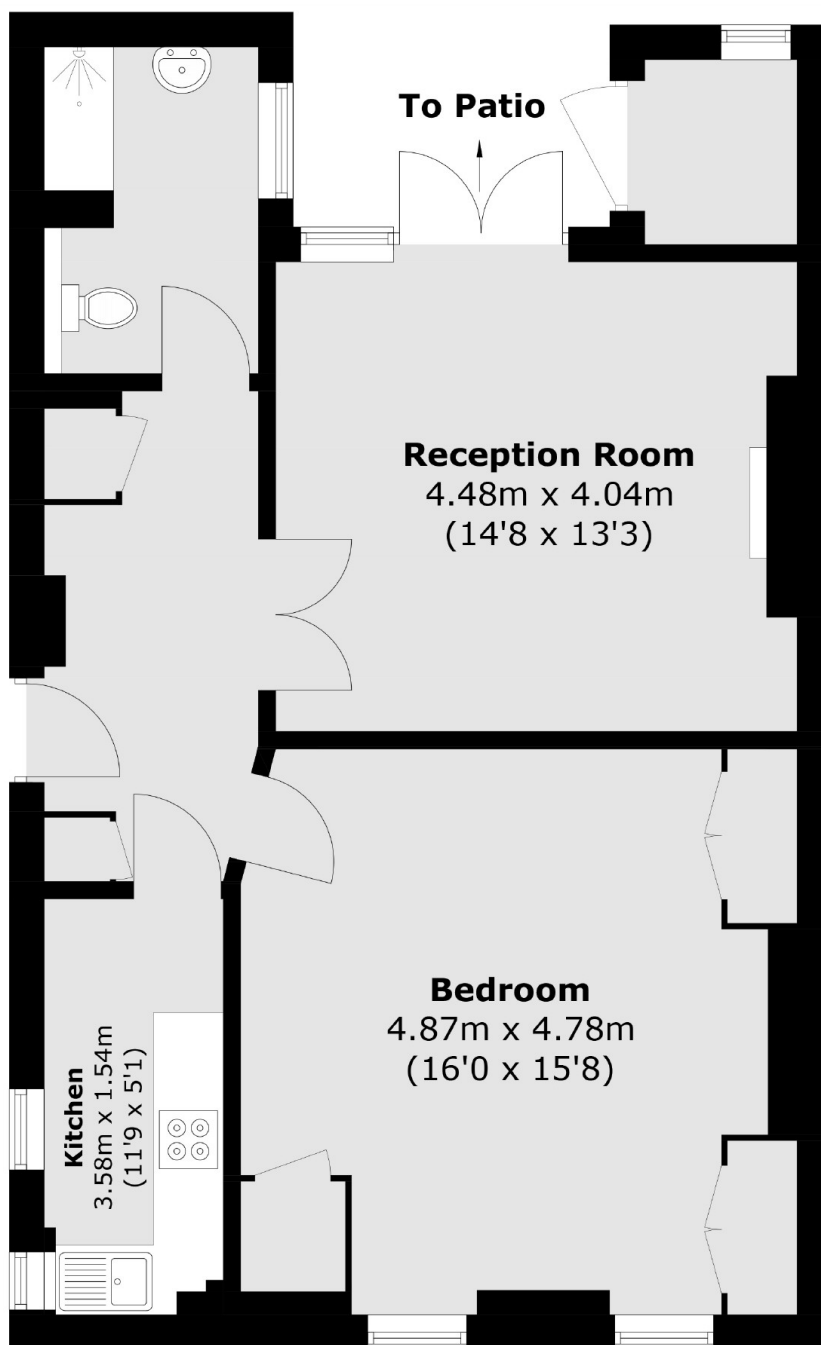
- One Bedroom Garden Flat
- Period Features
- Minutes From The Heath
- Close To Shops And Cafes
- Good Transport Links
- Well Appointed



Shooters Hill Road, SE3



Shooters Hill Road, London, SE3



Total area (approx.): 62.4 sq. m (671.7 sq. ft)
External Storage : 2.2 sq. m (23.7 sq. ft)