

Seren Park Gardens, SE3

£375,000

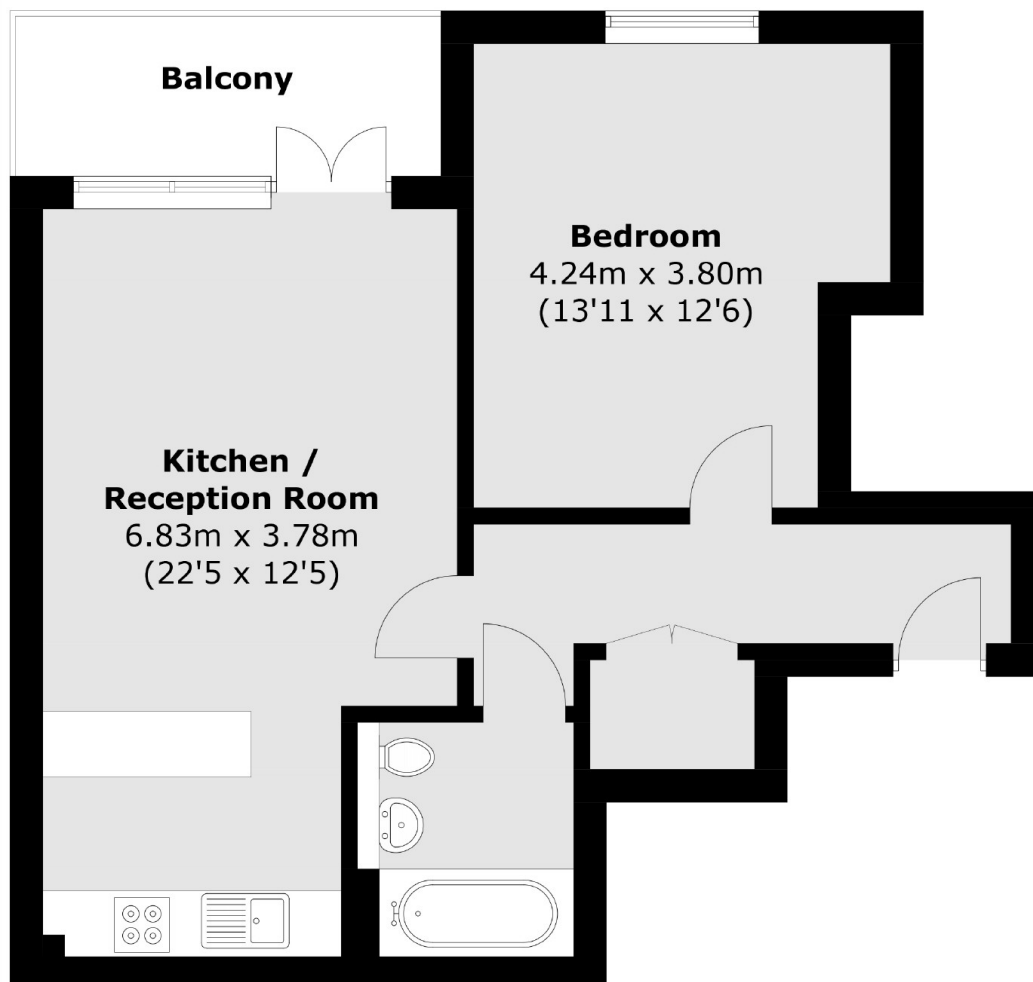
Beautifully maintained one bedroom sixth floor apartment with views of the Shard and the O2 from a private West facing balcony. This excellent property has a bright and spacious reception room which is open plan with a fully fitted kitchen. There is a double bedroom and a well maintained, contemporary bathroom. This development comes with 24 hour concierge and a communal roof terrace. Would make a fabulous first time buy.

Situated in a cul-de sac just 0.2 miles from Maze Hill Station and Greenwich Park, close to the centre of Greenwich and within easy access of North Greenwich Jubilee Line.

Features

OIEO £375,000
Stunning One Bedroom Flat
Views Across The City
Minutes From Greenwich Park
Minutes From Maze Hill Station
Communal Roof Terrace

Seren Park Gardens, London, SE3



Total area (approx.): 52.2 sq. m (561.9 sq. ft)
Balcony: 5.7 sq. m (61.3 sq. ft)