



Lyveden Road, SE3

£650,000

Fabulous extended two double bedroom Edwardian cottage which has period features throughout, excellent living space and is offered with the benefit of no chain.

Situated in the much sought after Rectory Fields conservation area, close to Westcombe Park Station, the shops and amenities at Blackheath Royal Standard and Greenwich Park. The property also sits in catchment area for two outstanding primary schools and an outstanding secondary school.

Features

- Two Double Bedroom Cottage
- Sought after Road
- Excellent Living Space
- Close to Transport and Shops
- South Facing Garden
- No Chain

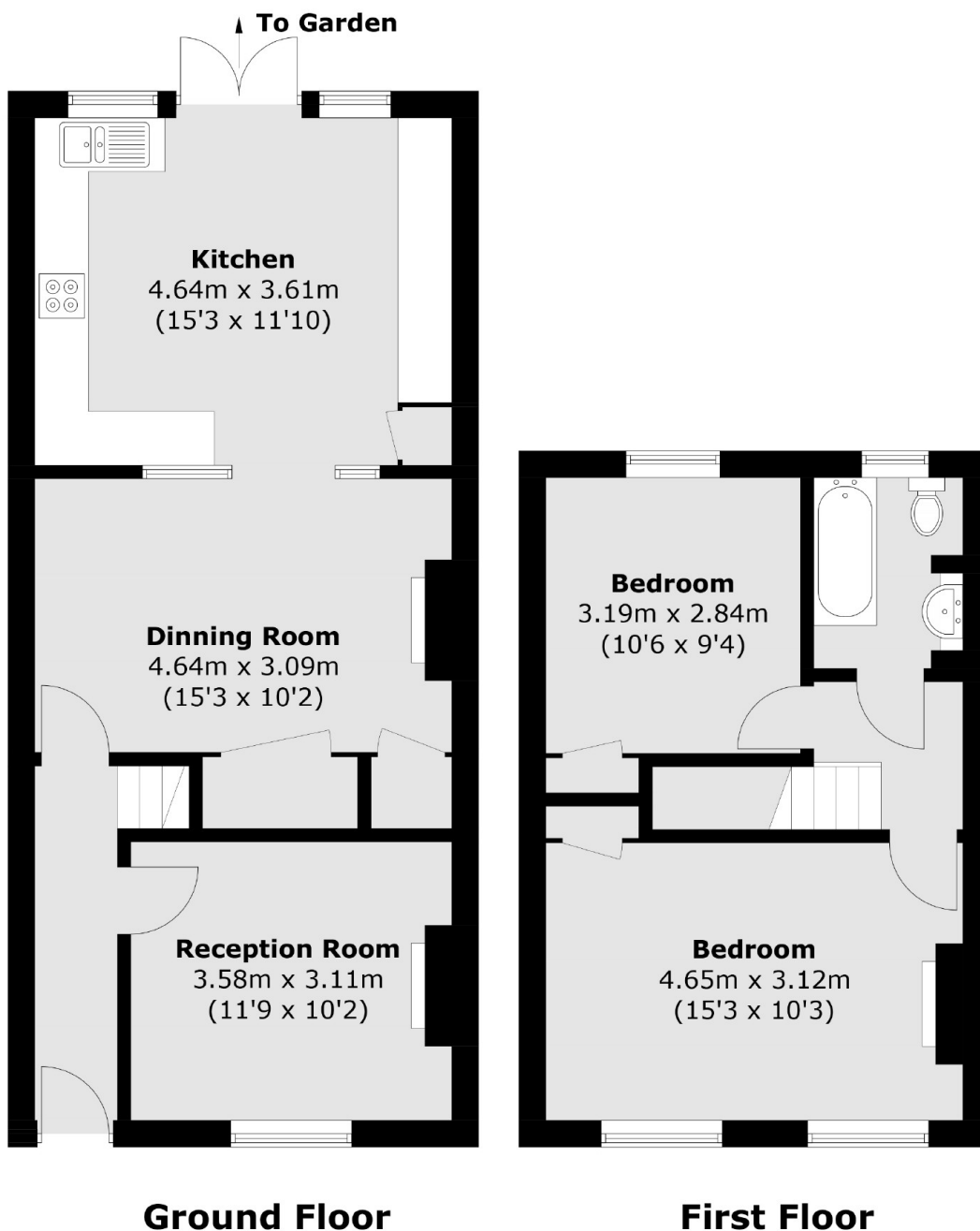


Lyveden Road, SE3

This lovely home has two reception rooms, both with feature fireplaces and a large kitchen extension which leads to a South Facing patio garden. Both bedrooms are double rooms and have built in storage cupboards, there is also an upstairs family bathroom. Must be viewed.



Lyveden Road, London, SE3



Total area (approx.): 85.8 sq. m (923.5 sq. ft)