



Shooters Hill Road, SE3

£550,000

'OIEO £550,000" Large two double Bedroom ground floor conversion flat, with it's own private entrance and access to a well kept communal garden.

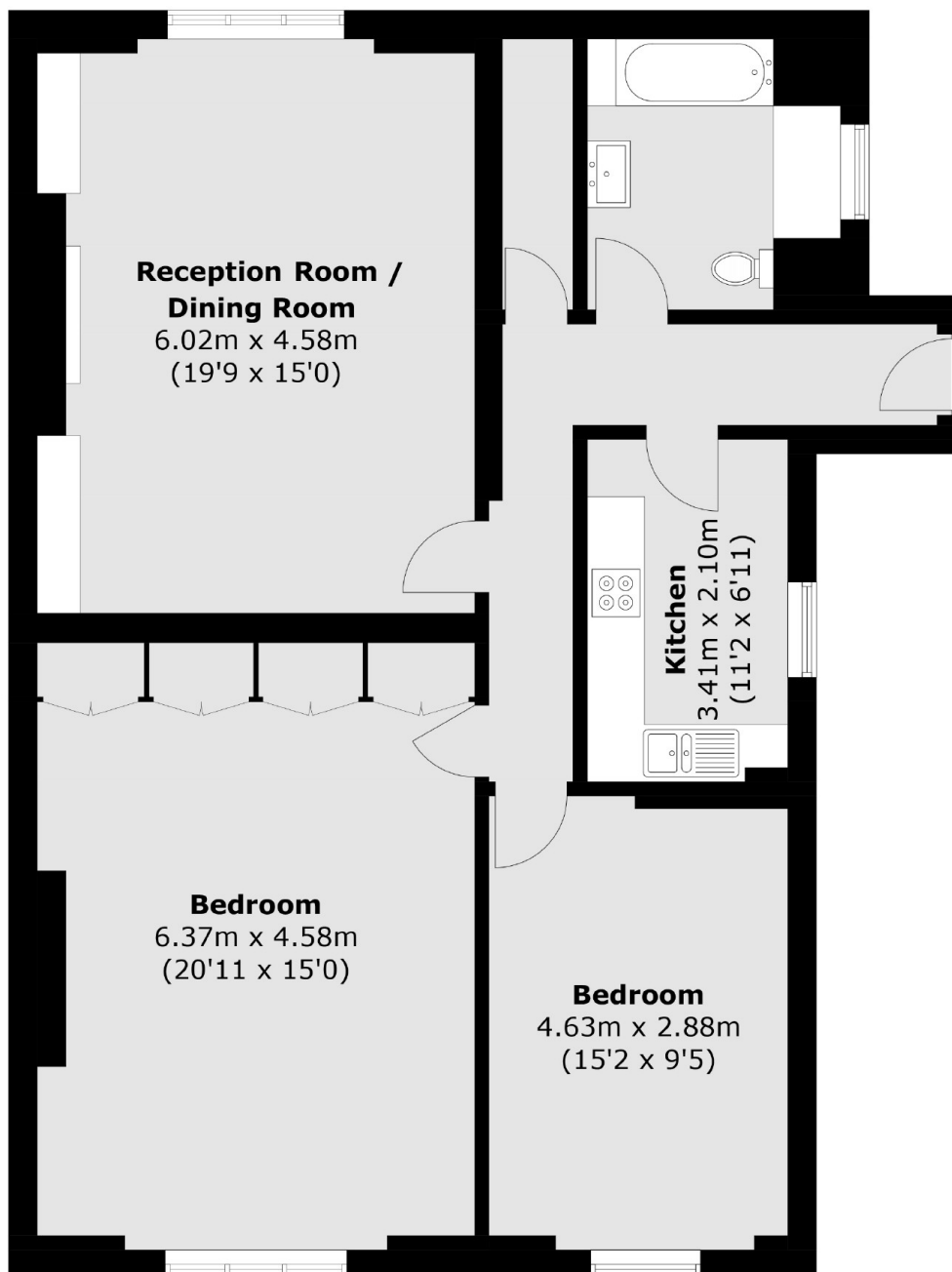
Measuring 19' x 15", the reception room has a feature fireplace and bespoke storage, and has great space for living and dining. The kitchen has been fitted with integrated appliances and has a small loft space , ideal for storage and there is a modern, spacious family bathroom. Both bedrooms are situated at the rear of the building and over look the pretty rear garden. Must be viewed.

Situated in an excellent position, minutes from the Heath, close to Blackheath Royal Standard for its shops, cafés and amenities. There is a regular bus route to North Greenwich Jubilee line, and the property is in close proximity to both Blackheath and Westcombe Park Station.

Features

Stunning Ground Flat Flat
Minutes From The Heath
Close To Shops And Transport
Large Communal Garden
Parking Space
Offers Excellent Space

Shooters Hill Road, London, SE3



Total area (approx.): 103.2 sq. m (1,110.8 sq. ft)