



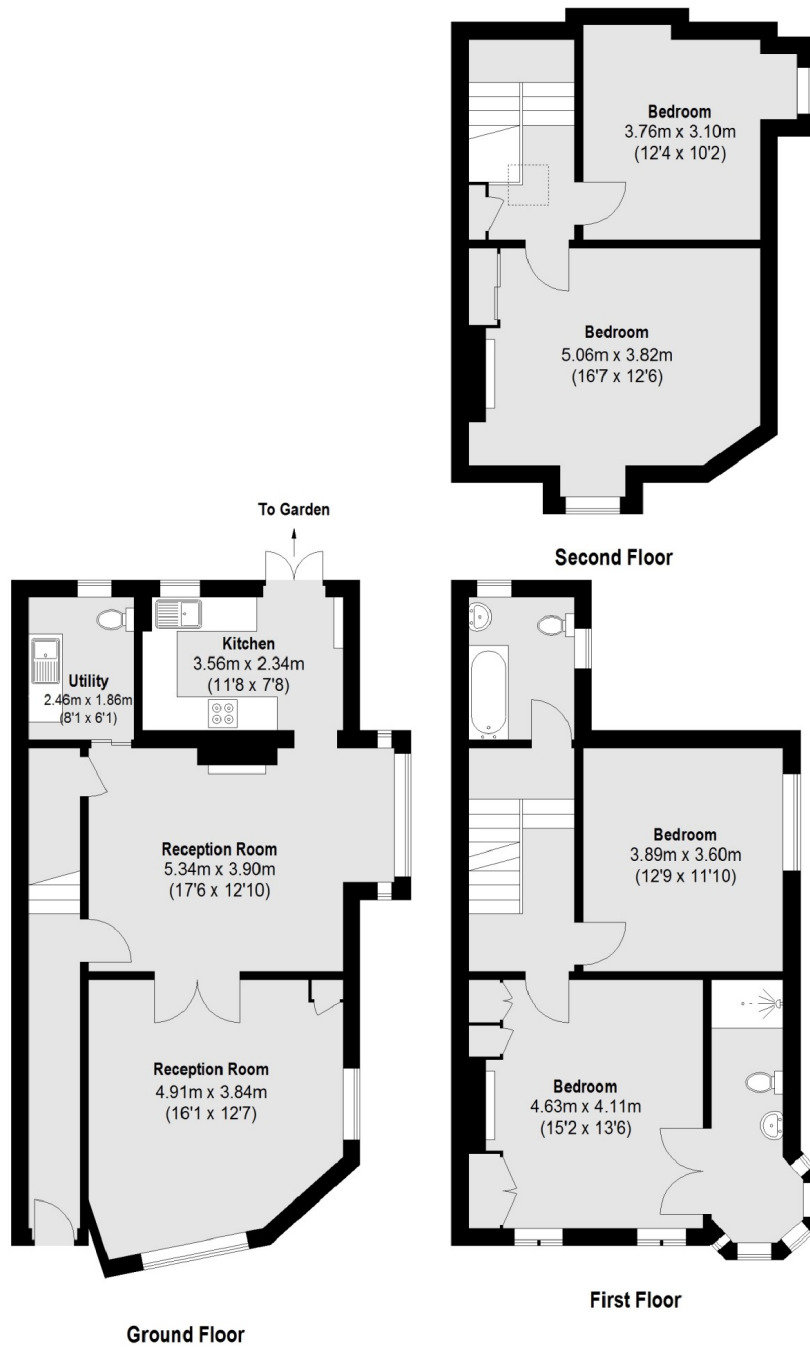
Bramshot Avenue, SE7

Per calendar month

Unique three storey end of terraced Edwardian house situated in an excellent position for schools, transport and the shops and amenities of Blackheath Royal Standard.

0.4 miles from Westcombe Part station and a short distance to local shops and amenities in Blackheath Royal Standard.

- Available now • Four bedroom • Two receptions •
- Three bathrooms • Unfurnished • Three storey •



Total area (approx.): 154.17 sq. m (1659 sq. ft)

Peter James Lee
430-432 Lee High Road, Lee,
London, SE12 8RW
020 3862 7111
leelettings@peterjamesstates.co.uk

Energy Rating: We aim to make our particulars both accurate and reliable. However they are not guaranteed; nor do they form part of an offer or contract. If you require clarification on any points then please contact us, especially if you're traveling some distance to view. Please note that appliances and heating systems have not been tested and therefore no warranties can be given as to their good working order.