



Westcombe Park Road, SE3

£400,000

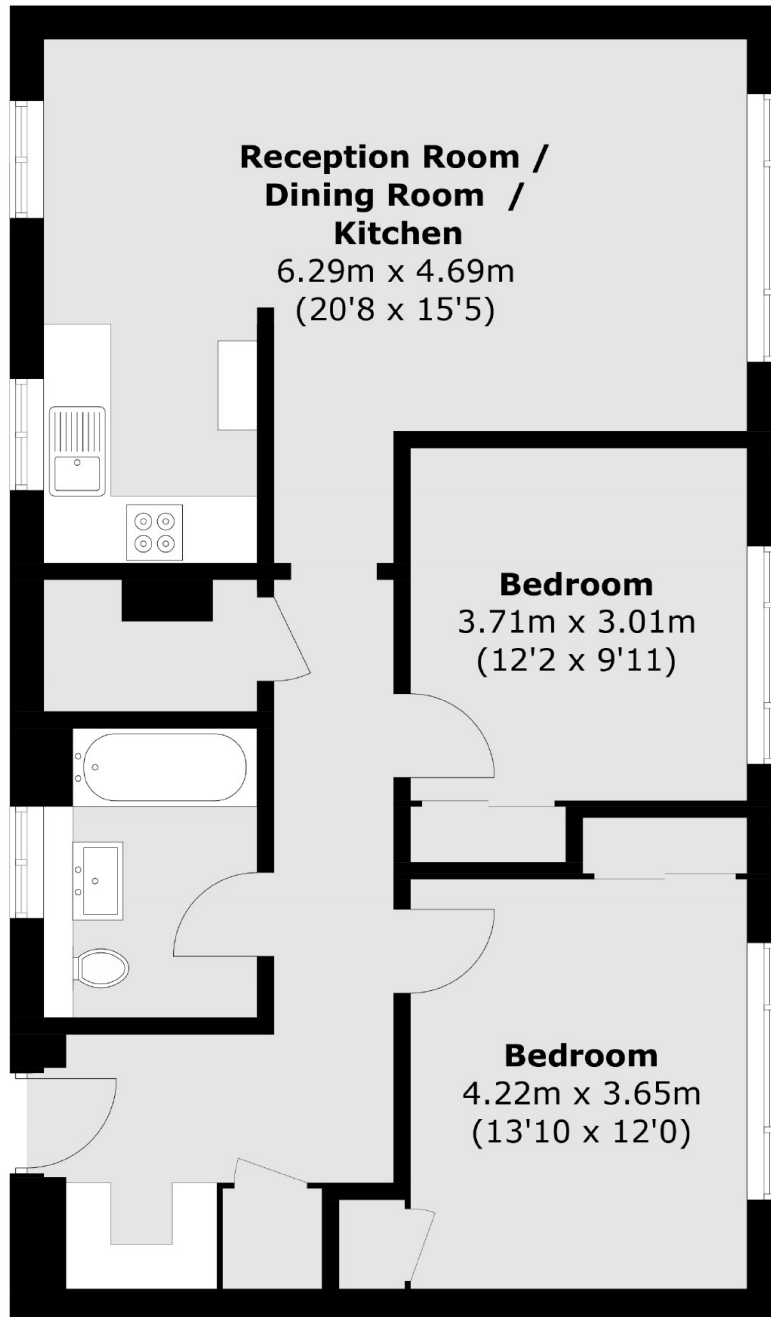
Offered with no chain comes this bright and spacious two double bedroom top floor flat which has the benefit of a share of the freehold, a garage en bloc and lots of storage. There is a large reception room which has space for dining and is open plan to a well fitted kitchen. Both bedrooms have fitted wardrobes and there is a family bathroom. Excellent first time buy.

In the heart of Westcombe Park, minutes from shops and amenities. Excellent location for bus routes to North Greenwich, Lewisham and Central London. Close to Greenwich park and Blackheath.

Features

- Two Double Bedrooms
- Share Of Freehold
- Excellent Location For Transport
- Close to Greenwich Park
- Communal Gardens
- Garage

Westcombe Park Road, London, SE3



Total area (approx.): 70.5 sq. m (758.9 sq. ft)