



Eastcombe Avenue, SE7

£425,000

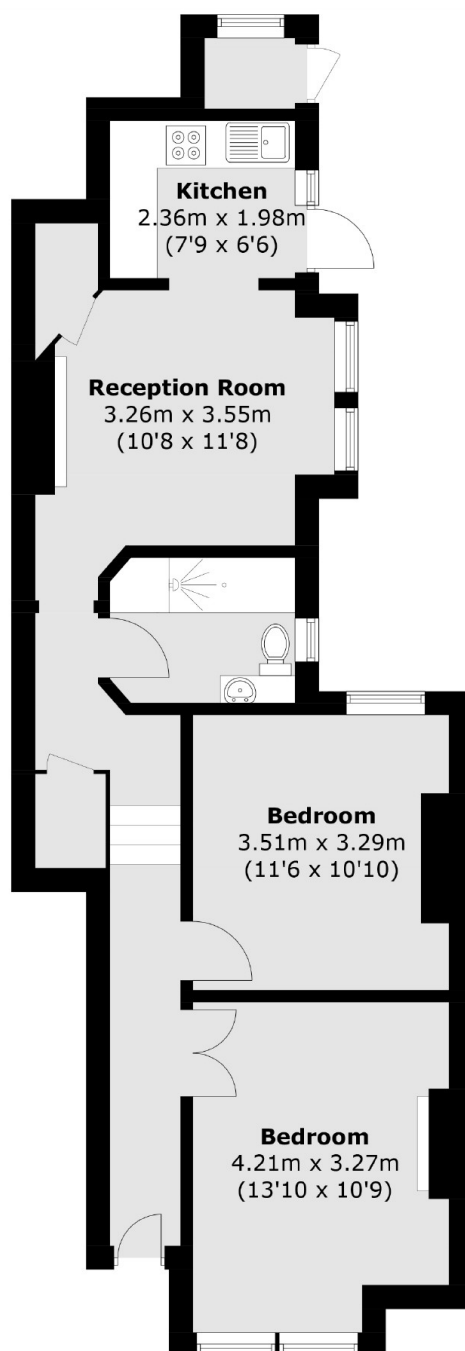
Stunning two bedroom ground floor flat with it's own private south facing garden and flexible living accommodation. The property is immaculate throughout and has a fully fitted contemporary kitchen, a spacious and well appointed shower room, two large bedrooms and a reception room open to the kitchen. The property retains some period features and the rear garden is decked and easy to maintain, must be viewed.

Situated within half a mile of Westcombe Park Station and close to Blackheath Royal Standard for its shops, cafés and Marks and Spencer's food hall. North Greenwich Jubilee line is within easy access and there are regular buses to Woolwich for the Elizabeth Line.

Features

- Stunning Two Bedroom Flat
- Private Garden
- Sought After Area
- Close To Transport
- Modern Kitchen
- Stunning Bathroom

Eastcombe Avenue, London, SE7



Ground Floor

Total area (approx.): 60.0 sq. m (645.8 sq. ft)