



## Rectory Field Crescent, SE7

£300,000

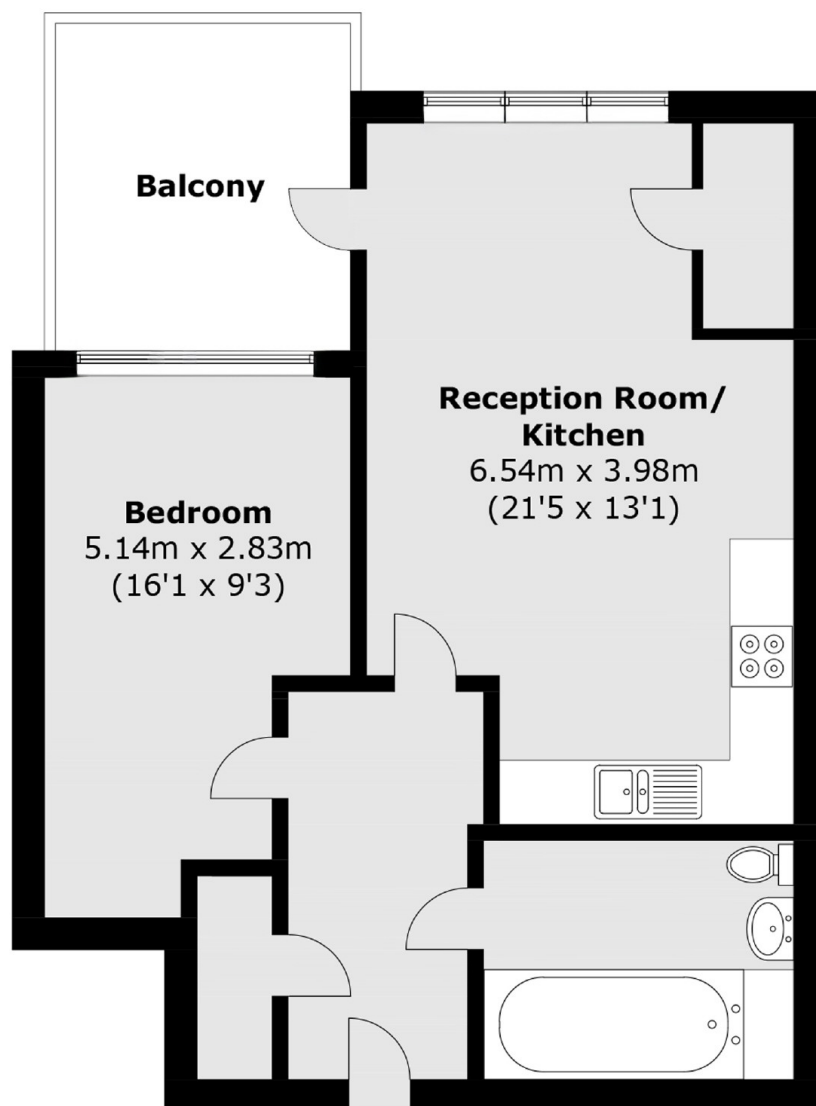
Nestled within a sought-after modern development, located in Charlton, this well-maintained one-bedroom apartment offers a contemporary open plan kitchen, equipped with modern appliances and fitted cabinets. The spacious one bedroom flat offers direct access to a private balcony and comes with private parking.

Samuel Johnson House is perfectly placed for Charlton station with frequent rail links into the city. The green open spaces of Charlton Park is within easy reach as are the array of independent shops and restaurants of Charlton Village and Shooters Hill Road.

### Features

- Large One Bedroom Flat
- Private Parking
- Excellent Condition Throughout
- Long Lease
- Open Plan Living
- Close To Transport Links

# Rectory Field Crescent, London, SE7



Total area (approx.): 53.3 sq. m (573.7 sq. ft)

Balcony area (approx.): 8.4 sq. m (90.4 sq. ft)