



## Broad Walk, SE3

£800,000

Immaculate three bedroom semi detached family house which has been extended to the rear and should be viewed to appreciate the light and space this house has to offer.

Situated in a popular tree lined road, within close proximity of Kidbrooke Station, regular bus routes for North Greenwich Jubilee Line, and within catchment area of Thomas Tallis school.

### Features

Stunning Extended Semi  
Close to Kidbrooke station  
Close to Thomas Tallis  
Backing onto Playing Fields  
Garage and Driveway  
Large South Facing Garden

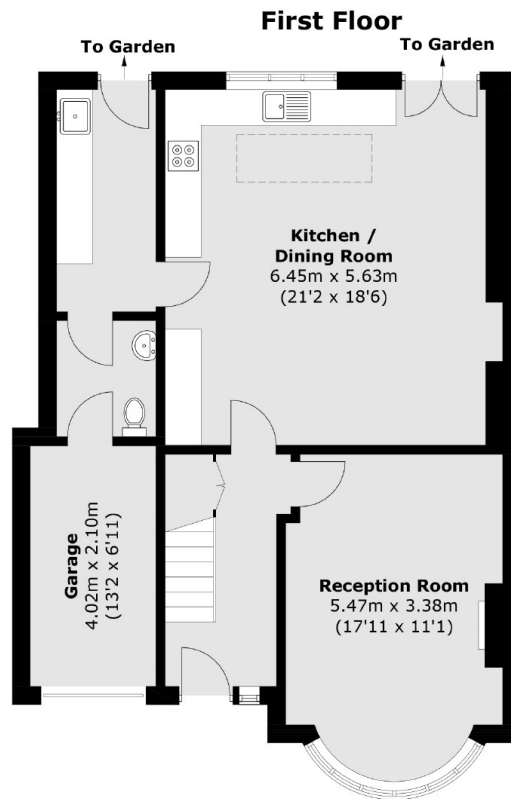
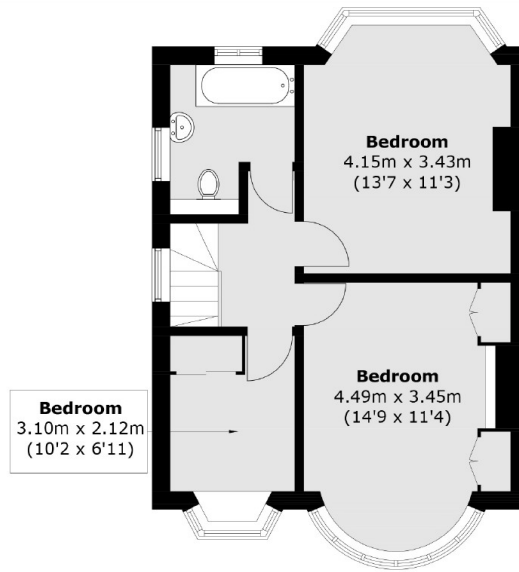


## Broad Walk, SE3

The current owners have created a large reception room kitchen which is fully fitted, has lots of space for dining and living. There is a separate utility room and garage space. The reception room to front, has a feature fireplace and wooden floors. Upstairs are three bedrooms and a large, bright and well appointed bathroom. Outside is a beautiful rear garden is South West Facing and backs onto the playing fields and the front driveway to front has been paved and has raised flower beds.



# Broad Walk, London, SE3



Total area (approx.): 123.1 sq. m (1,325.0 sq. ft)  
(Including Garage)