



Westcombe Park Road, SE3

£285,000

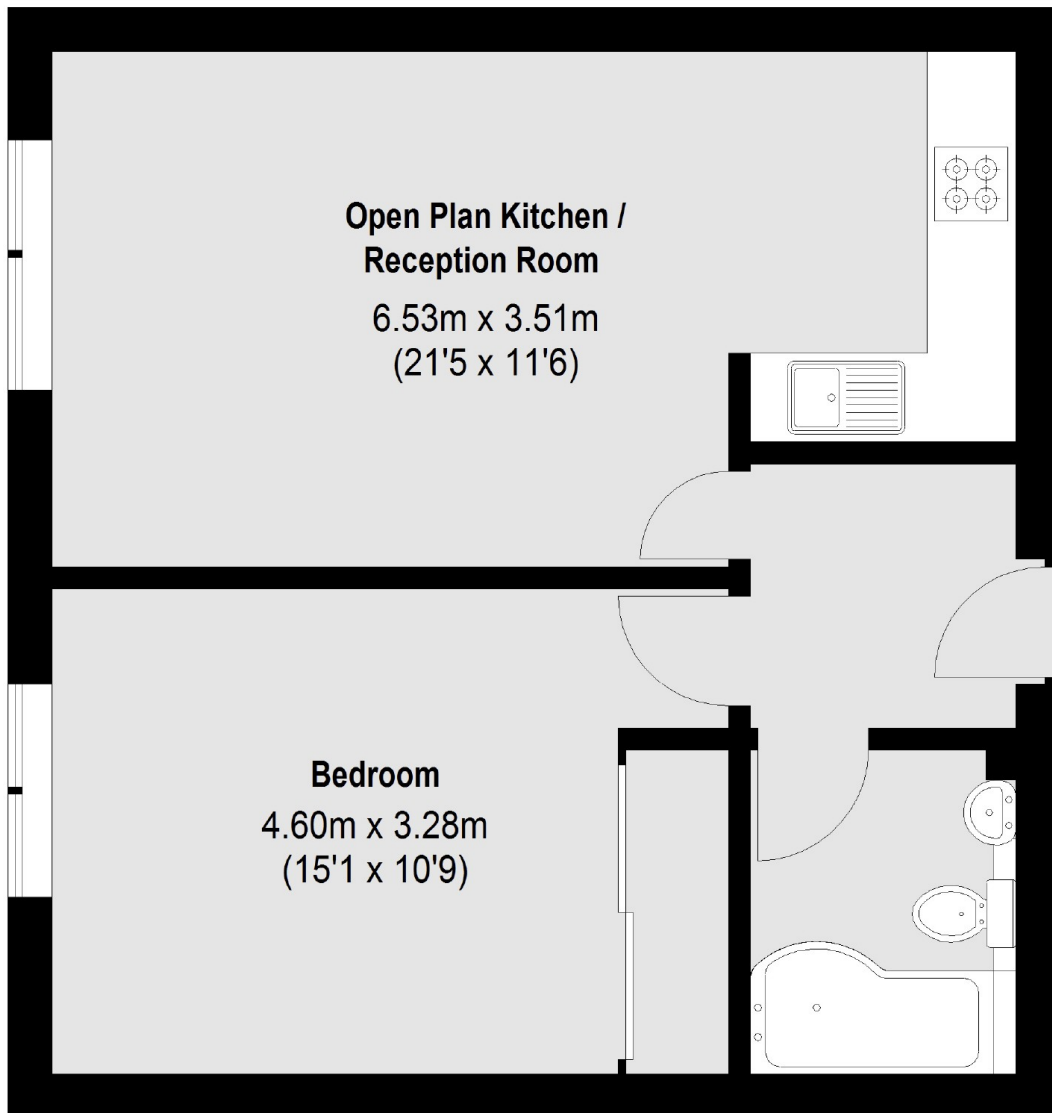
A spacious one bedroom unfurnished retirement flat situated in a much sought after block in Westcombe Park. This property offers good sized rooms, a west facing balcony and has good storage throughout. This property is warden assisted and is well maintained with stunning communal grounds, parking and communal residence lounge and laundry room. Offered with no chain, must be viewed.

Located in the heart of Blackheath Standard, set back from the road and close to all the shops and amenities, within half a mile of Westcombe Park station and minutes to buses for North Greenwich, Greenwich and Blackheath.

Features

- One Double Bedroom
- Retirement Flat Over 55's
- No Chain
- Beautifully Maintained Block
- Excellent Location For Shops
- Balcony

Westcombe Park Road, London, SE3



First Floor

Total area (approx.): 45.69 sq. m (492 Sq. ft)