



## Parkdale Road, SE18

£550,000

Beautifully renovated three storey Victorian terraced house situated on a quiet residential road which is offered for sale with no chain.

Set over three floors, this property offers versatile living accommodation and would make an excellent family home or an investment purchase.

There is a large, modern fitted kitchen, a separate dining room and a well appointed bathroom situated on the ground floor. The hall floor has two large rooms which could be used as living space or as bedrooms and there are two further double bedrooms on the top floor with a newly fitted shower room.

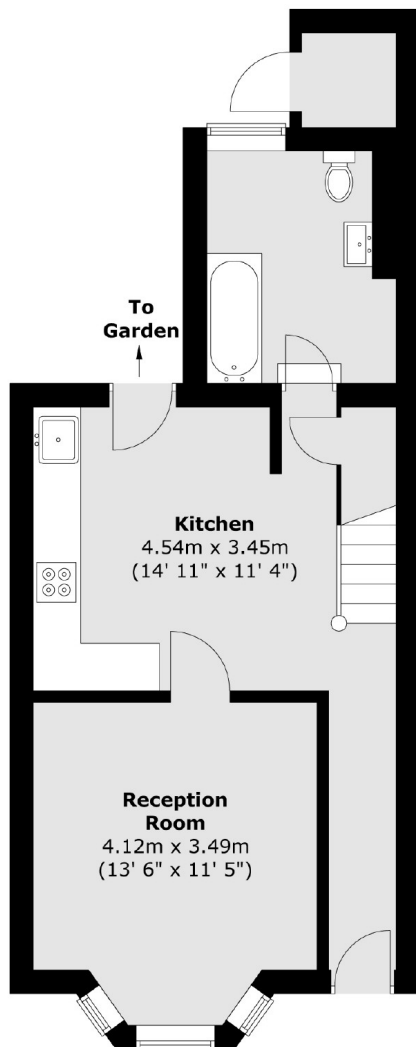
Minutes from Plumstead station and conveniently situated for the Elizabeth line, Woolwich Arsenal DLR and overhead lines and close to Plumstead Common.

### Features

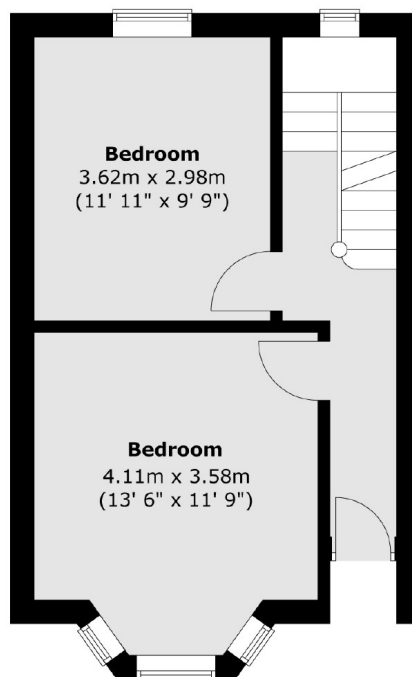
- OIEO £550,000
- Four Double Bedroom House
- Two Bathrooms
- Beautifully Appointed
- Close To Plumstead Station
- Minutes From The Elizabeth Line
- Offered With No Chain

# Parkdale Road, London, SE18

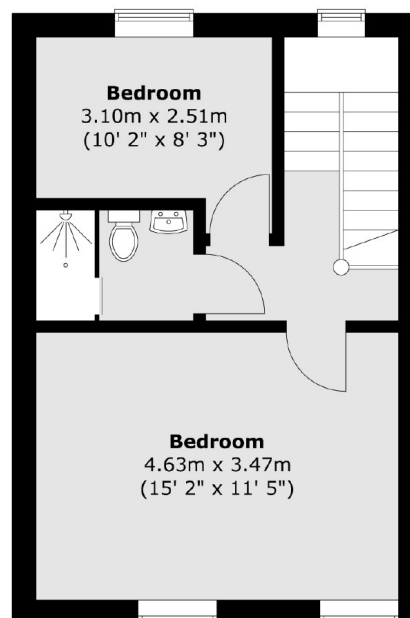
## Lower Ground Floor



## Ground Floor



## First Floor



Total area (approx.) : 108.5 sq. m (1168 sq. ft)  
Total store area (approx.) : 1.4 sq. m (15 sq. ft)