



## Mycenae Road, SE3

### £450,000

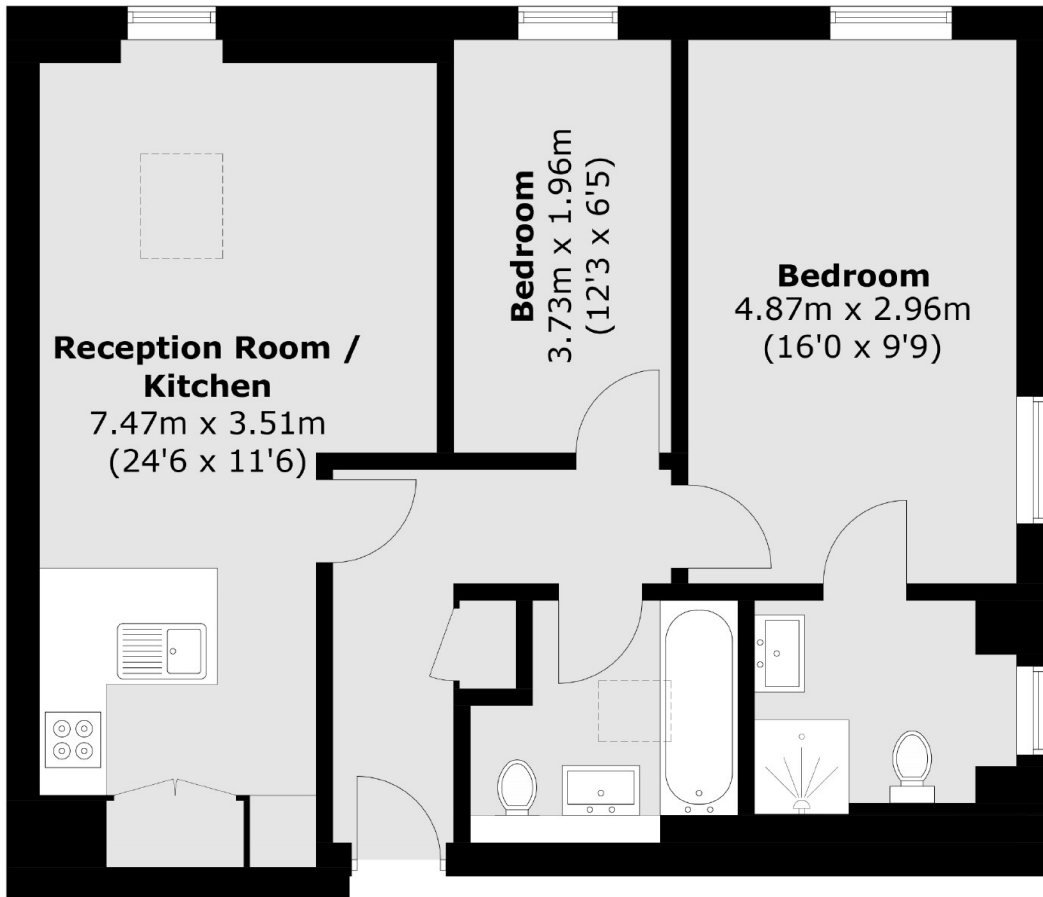
Two bedroom top floor apartment which is offered onto the market in excellent condition with no chain. This newly decorated flat is well appointment and comes with a fully integrated kitchen which is open plan to the reception room. Two bedrooms, the master with a stylish en-suite shower room and there is a large family bathroom which is bright and well appointed. This property is offered with an allocated parking space.

Situated in the grounds of Mycenae House, within minutes of Westcombe Park Station, the shops, cafés and amenities at Blackheath Royal Standard and close to the heath and Greenwich park.

### Features

Heart Of Westcombe Park  
Minutes From The Station  
Two Bedrooms And Bathrooms  
No Chain  
Newly Decorated Throughout  
Parking Space

# Mycenae Road, London, SE3



Total area (approx.): 64.5 sq. m (694.3 sq. ft)