



Mayhill Road, SE7

£835,000

Spacious four bedroom extended terraced house which has been extensively refurbished by the current owners and is bright, modern and neutrally decorated throughout.

Located on the popular Charlton Slopes, in a wide, sought after road, within the catchment area of popular primary schools, an outstanding secondary school and nurseries. There are excellent transport links to the City and Canary Wharf with regular buses for North Greenwich station and within 0.5 miles of Westcombe Park Station. This property is also a short walk away from Greenwich Park.

Features

- Sought After Location
- Four Bedrooms
- Two Bathrooms
- Excellent Condition Throughout
- New Loft Conversion
- Outstanding Schools Nearby

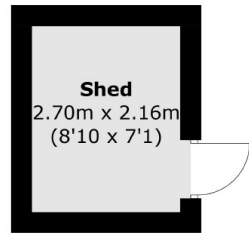


Mayhill Road, SE7

Accommodation comprises of a large through reception room with wood floors, a feature fireplace and access to the garden. There is a sleek, fully integrated kitchen and access to the garden. Upstairs are three bedrooms, the largest with floor to ceiling wardrobes and a family bathroom with a separate w/c. The loft has been converted into a fabulous master bedroom with a Juliet balcony, built in storage and benefits from a separate newly fitted shower room. This room also benefits from views across the City to the front and views over tree and roof tops to the rear. The rear garden has a good sized patio area and is lawned.

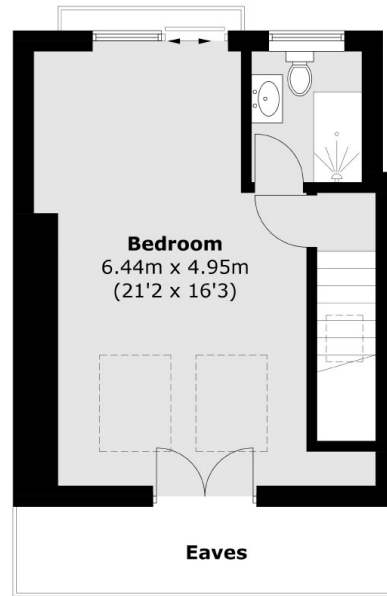


Mayhill Road, London, SE7

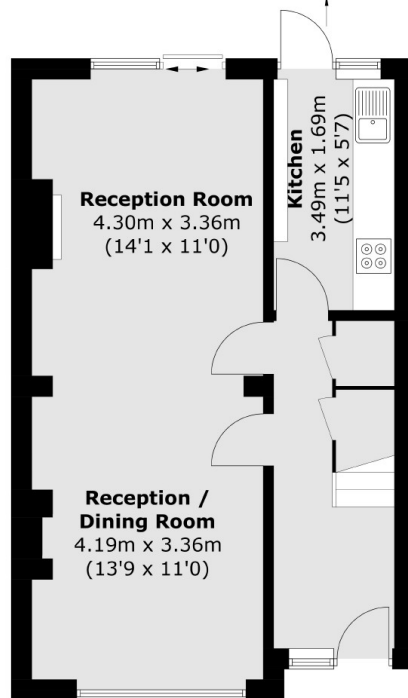


(Not Shown In Actual
Location / Orientation)

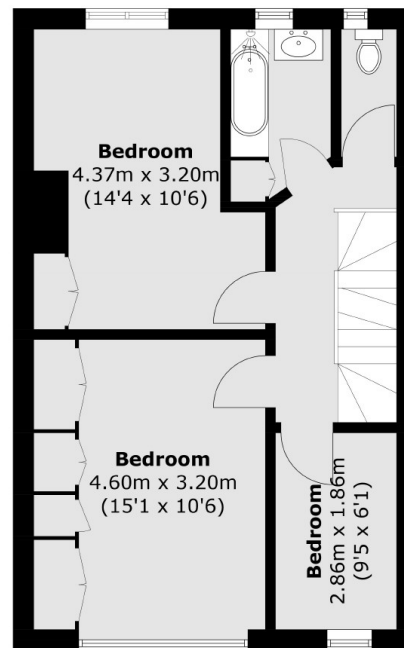
To
Garden



Second Floor



Ground Floor



First Floor

Total area (approx.): 121.6 sq. m (1,308.8 sq. ft)
Shed (approx.): 5.9 sq. m (63.5 sq. ft)
(Excluding Eaves)