



Casterbridge Road, SE3

£345,000

Two double bedroom ground floor purpose built flat which has been recently redecorated throughout and is offered to the market with no chain.

Situated on the much desired Cator Estate, which is a private estate in Blackheath Village. The village is 0.5 miles and has a range of restaurant's, shops and cafés and Blackheath station with trains into Charing Cross, London Bridge and Victoria.

Features

- Two Double Bedrooms
- Prestigious Private Estate
- Close To Blackheath Station
- West Facing Balcony
- Newly Decorated
- No Chain



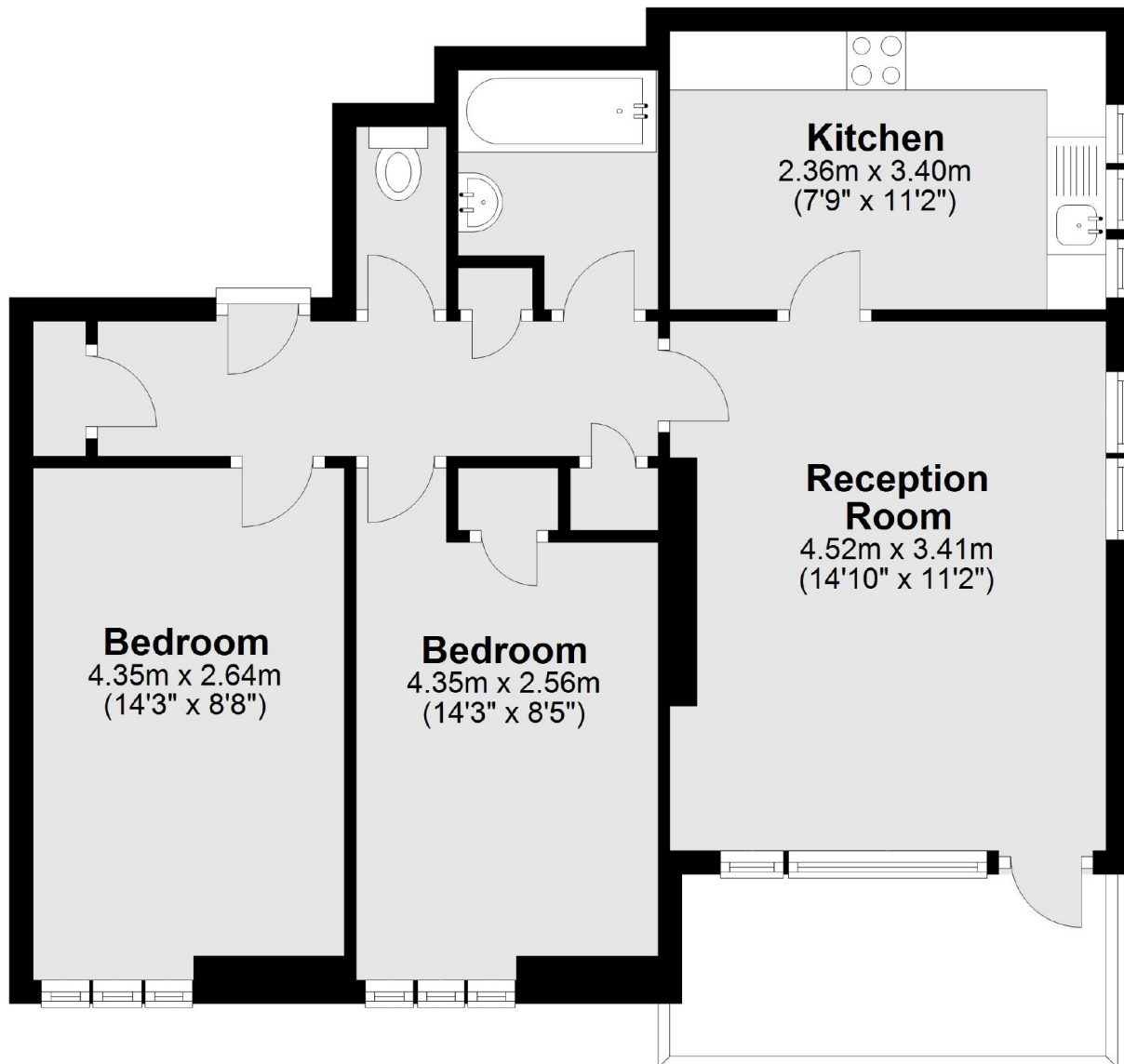
Casterbridge Road, SE3

The property benefits from double glazing and central heating, and has a good sized west facing balcony which has views over the communal gardens and pond. Would make an excellent first time buy or investment purchase.



Casterbridge Road, London, SE3

Ground Floor



Total area: approx. 61.1 sq. metres (657.3 sq. feet)