



Shooters Hill Road, SE3

£750,000

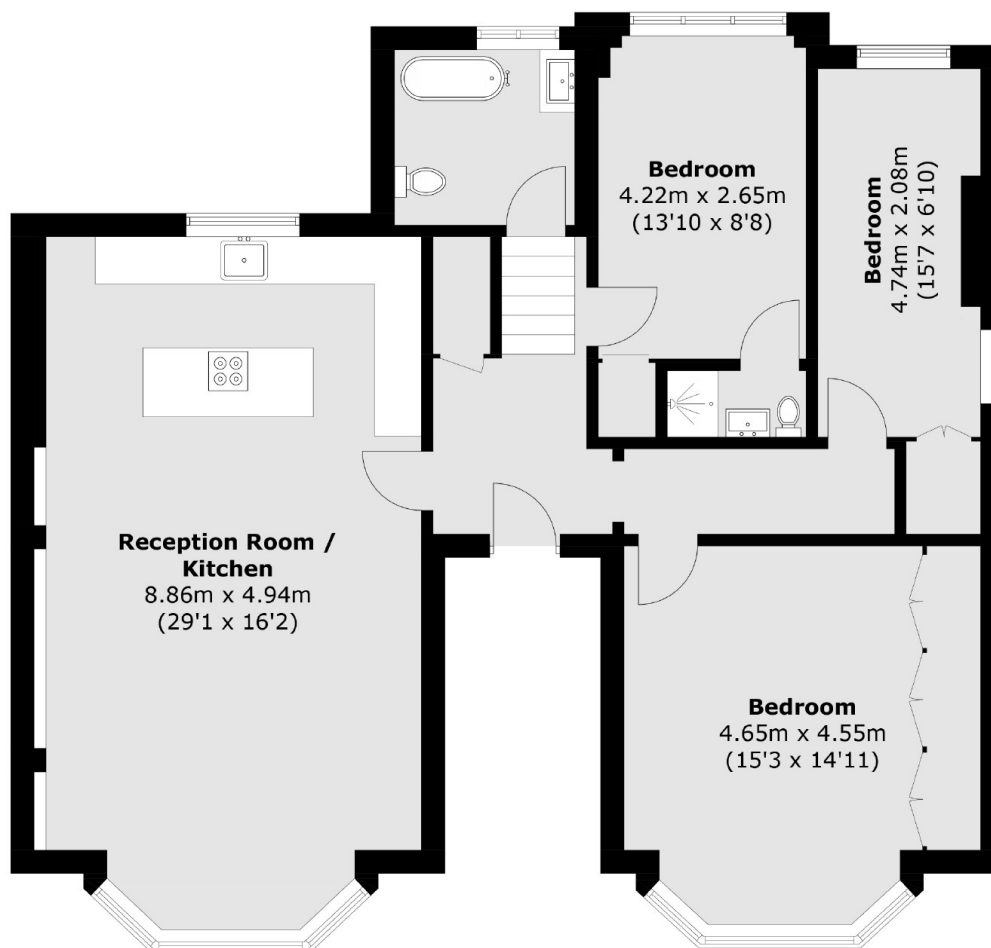
Spanning across the first floor of this detached Victorian mansion house and measuring over one hundred square meters comes this stunning three double bedroom, two bathroom conversion flat.

Situated minutes from Blackheath Royal Standard for it's shops, cafés and amenities. Within 0.7 miles of Blackheath Village and station, and close to bus routes to North Greenwich Jubilee line.

Features

- OIEO £750,000
- Three Double Bedrooms
- Two Bathrooms
- Beautifully Appointed
- Minutes From The Heath
- Close To Transport Links
- No Chain

Shooters Hill Road, London, SE3



Total area (approx.): 107.5 sq. m (1,157.1 sq. ft)