



Mccall Crescent, SE7

£450,000

Freehold two bedroom terraced house located in a much sought after spot, which benefits from double glazing and central heating. The kitchen is fitted with modern wall and base units with fitted appliances and there is a ground floor modern bathroom, plus an upstairs w/c. Both bedrooms upstairs are double and there is a loft for storage.

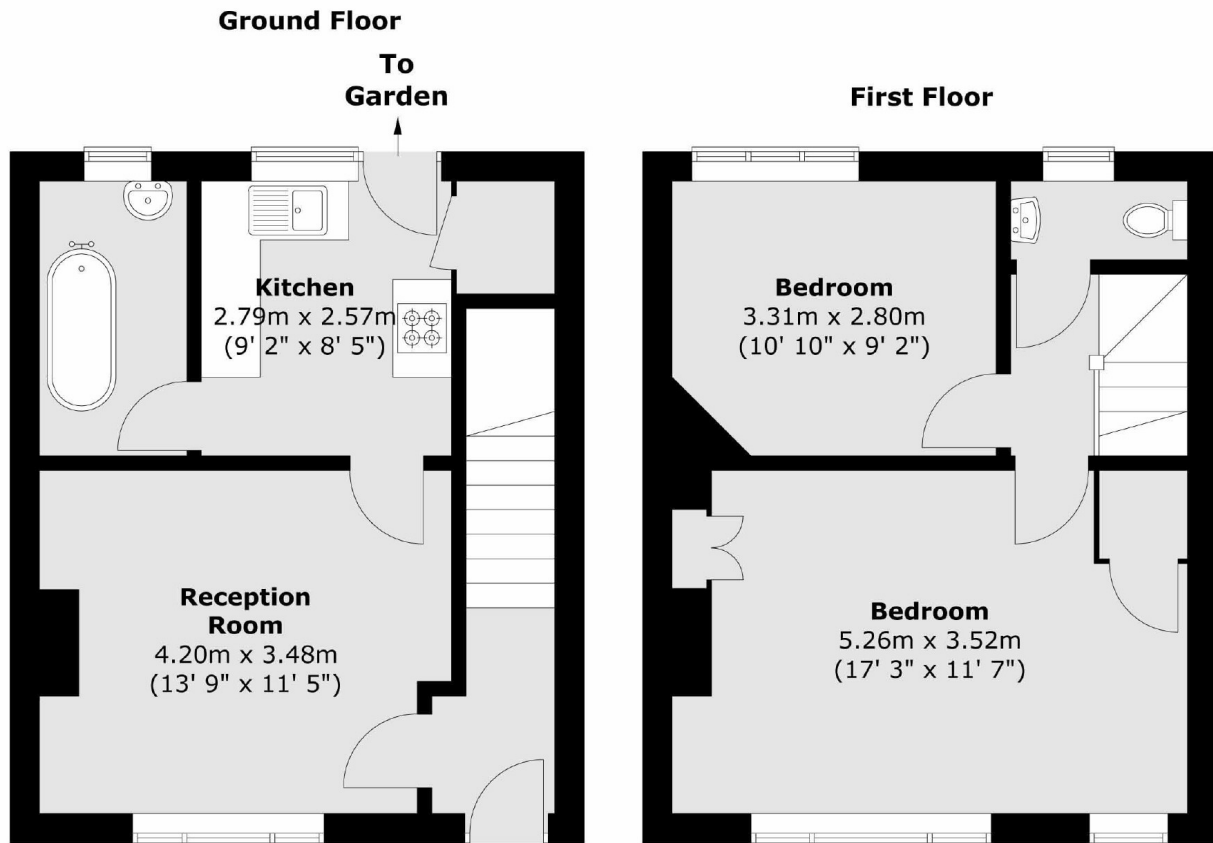
Outside is a large front garden which could be made into a driveway and a pretty rear garden.

Situated in a quiet and popular no through road opposite Maryon Wilson Park in Charlton, but close to transport links including Charlton station and Elizabeth Line at Woolwich.

Features

- Two Double Bedrooms
- Freehold
- Opposite Maryon Wilson Park
- Potential For Driveway
- Modern Fitted Kitchen
- Pretty Rear Garden

Mccall Crescent, London, SE7



Total area (approx.) : 68.1 sq. m (733 sq. ft)