



Westcombe Park Road, SE3

£750,000

Measuring 1440 Sq ft and set over two floors is this bright and spacious three/four bedroom conversion flat. This stunning property needs to be viewed to appreciate the space and versatile accommodation it has to offer.

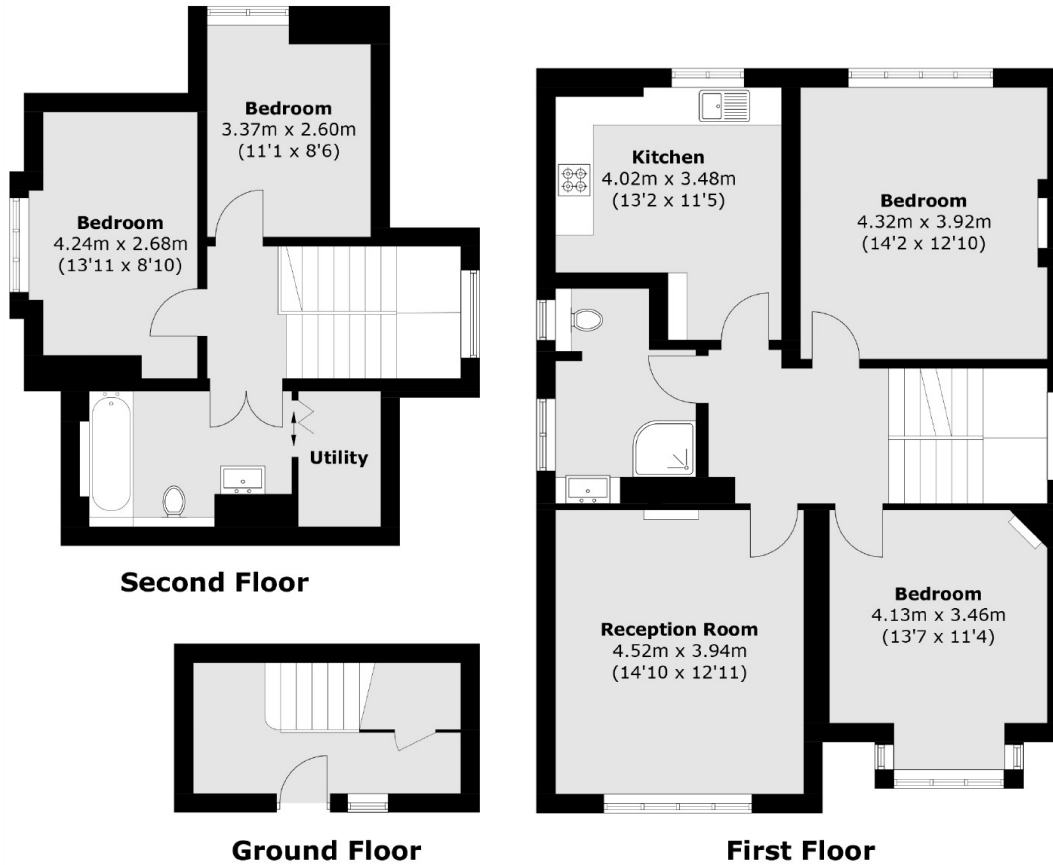
The current owner has refurbished the property throughout and has recently replaced the kitchen with high end fittings, both bathrooms which are both beautifully appointed and has redecorated throughout and replaced all the floor coverings. There is a large private, South Facing rear garden which has been landscaped, with a large lawned area, borders with mature shrubs and trees. This property is offered with no chain.

Situated in the heart of Westcombe Park, minutes from Blackheath Royal Standard shops, cafés and amenities. Within catchment area of outstanding schools and nurseries. Greenwich park is within a quarter of a mile and there are regular buses for North Greenwich Jubilee Line.

Features

Stunning Four Bedroom Flat
Private South Facing Garden
Offered With No Chain
Heart Of Westcombe Park
Minutes From The Station
Situated Over Two Levels

Westcombe Park Road, London, SE3



Total area (approx.): 133.8 sq. m (1,440.2 sq. ft)