



Victoria Way, SE7

£525,000

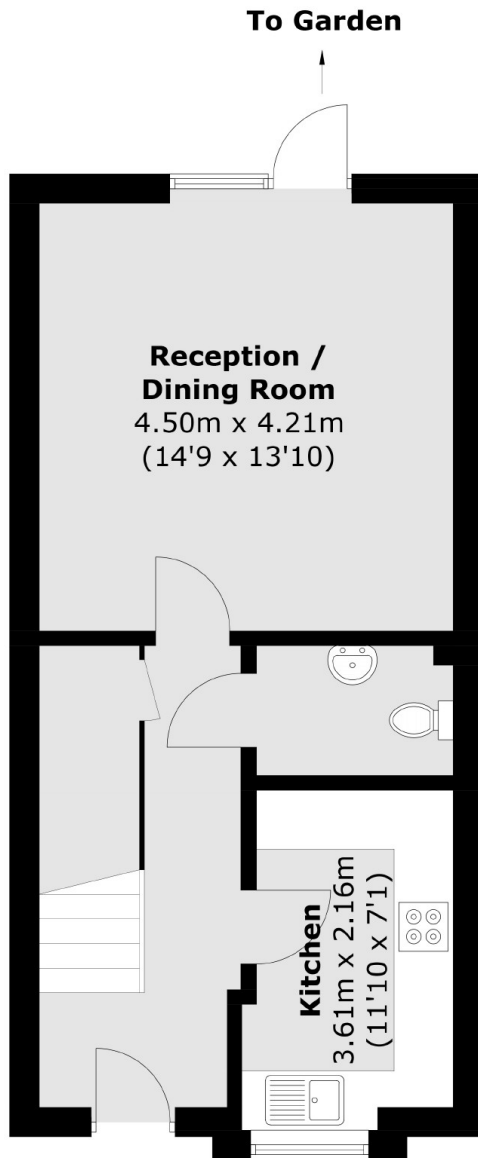
Two double bedroom terraced house, built in 2008, which offers great living accommodation, a good sized West facing garden and a driveway to front. Accommodation comprises of two double bedrooms, a family bathroom, plus a downstairs w/c which is large enough for disabled access. There is a fitted kitchen and bright reception which open looks the garden. Must be viewed.

Situated in a fantastic location for transport, including Charlton Station and for bus routes to both the Elizabeth Line and North Greenwich Jubilee Line.

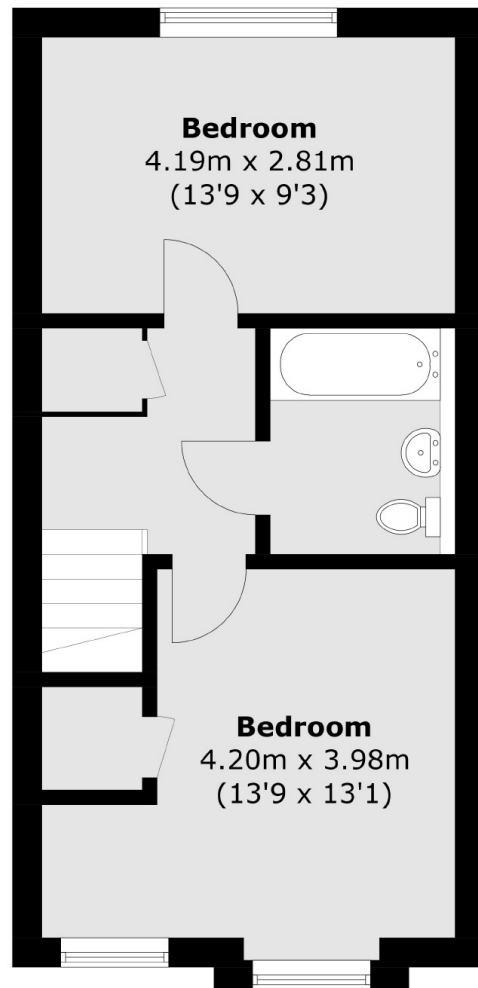
Features

Two Double Bedrooms
Minutes From The Station
Close To Shops And Superstores
West Facing Garden
Driveway
Modern Build

Victoria Way, London, SE7



Ground Floor



First Floor

Total area (approx.): 78.2 sq. m (841.7 sq. ft)