



Priory Park, SE3

£699,950

Three bedroom terraced house situated on the much sought after Cator Estate. This much-loved home is offered with no chain and does not require renovation but benefits from gas central heating with a recently installed Vaillant boiler, some double glazing and has lots of potential for extending to the rear of the property (STPP).

There is a through reception room which leads to the kitchen, which overlooks the mature rear garden, larger than the adjoining properties, and benefits from rear access.

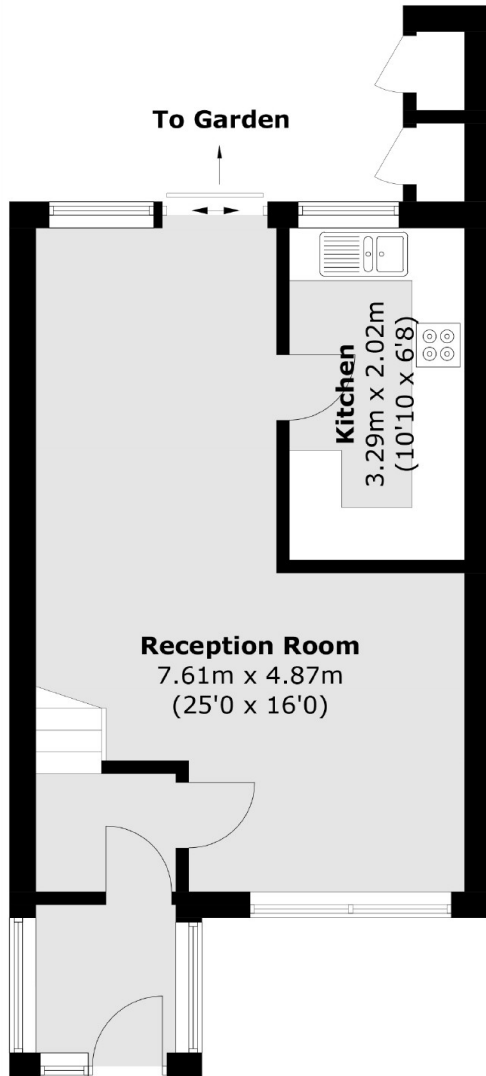
Upstairs are three bedrooms and a family bathroom. Must be viewed.

Situated on the much sought after Cator Estate, close to Blackheath Village and Station and for shops and restaurants in the Village and at Lee Green.

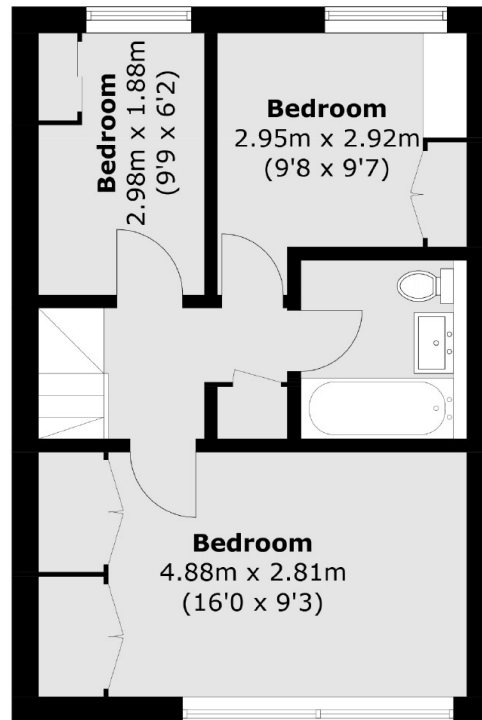
Features

- Sought After Cator Estate
- Private Road
- Close To Blackheath Village
- Large Garden
- In Need Of Modernisation
- No Chain

Priory Park, London, SE3



Ground Floor



First Floor

Total area (approx.): 77.7 sq. m (836.3 sq. ft)
External Stores (approx.): 1.1 sq. m (11.8 sq. ft)