



## Couthurst Road, SE3

£700,000

Stunning two bedroom extended cottage which has been beautifully refurbished and reconfigured by the current owners.

Situated in Rectory Fields, which is a much sought after conservation area. Close to Blackheath Royal Standard for its shops, cafés and amenities and to Westcombe Park Station, buses to North Greenwich and the Elizabeth line. The property sits within catchment area of sought after primary schools and an outstanding secondary school.

### Features

Stunning Two bedroom Cottage  
Beautifully Extended Kitchen  
Contemporary Bathroom  
South West Facing Garden  
Conservation Area  
Close to Shops and Transport



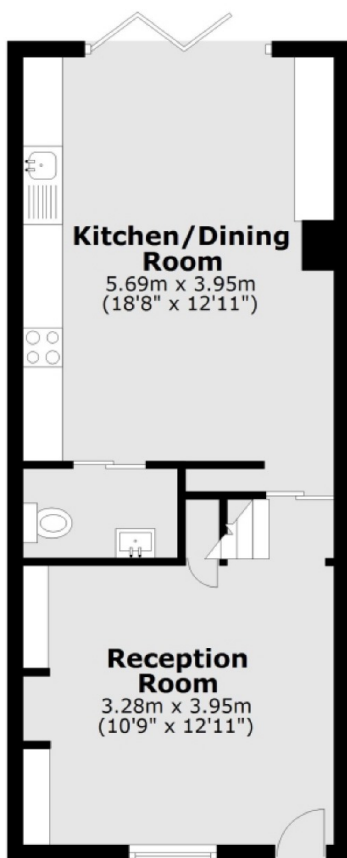
## Couthurst Road, SE3

The property is South West facing to the rear and the kitchen has bi-folding doors which leads onto a Courtyard garden which has been landscaped and is low maintenance. There is a separate reception room to the front with bespoke storage. Upstairs are two bedrooms, the master with fitted floor to ceiling wardrobes and a beautifully appointed Jack and Jill shower room with marble tiles and contemporary fittings.

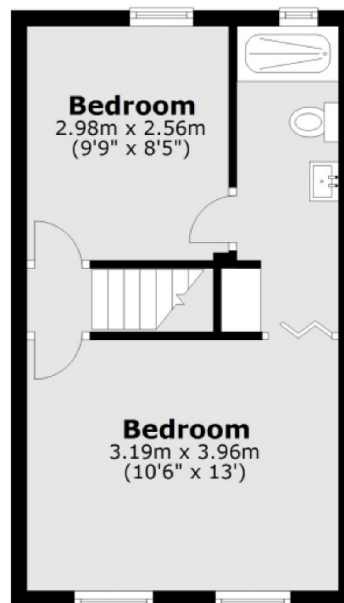


# Couthurst Road, London, SE3

## Ground Floor



## First Floor



Total area: approx. 68.2 sq. metres (733.7 sq. feet)