



Lizban Street, SE3

£750,000

Fabulous three storey Edwardian terraced house which has been renovated by the current owners and offers a contemporary and modern feel throughout, and is spacious and bright.

Situated in the much sought after Rectory Fields conservation area, minutes to Blackheath Royal Standard, within catchment area of outstanding primary schools and to the popular Leigh Academy secondary school.

Features

- Three Storey
- Three Double Bedrooms
- Close To Blackheath Standard
- Excellent For Transport Links
- Catchment Area Of Schools
- Well Appointed Throughout

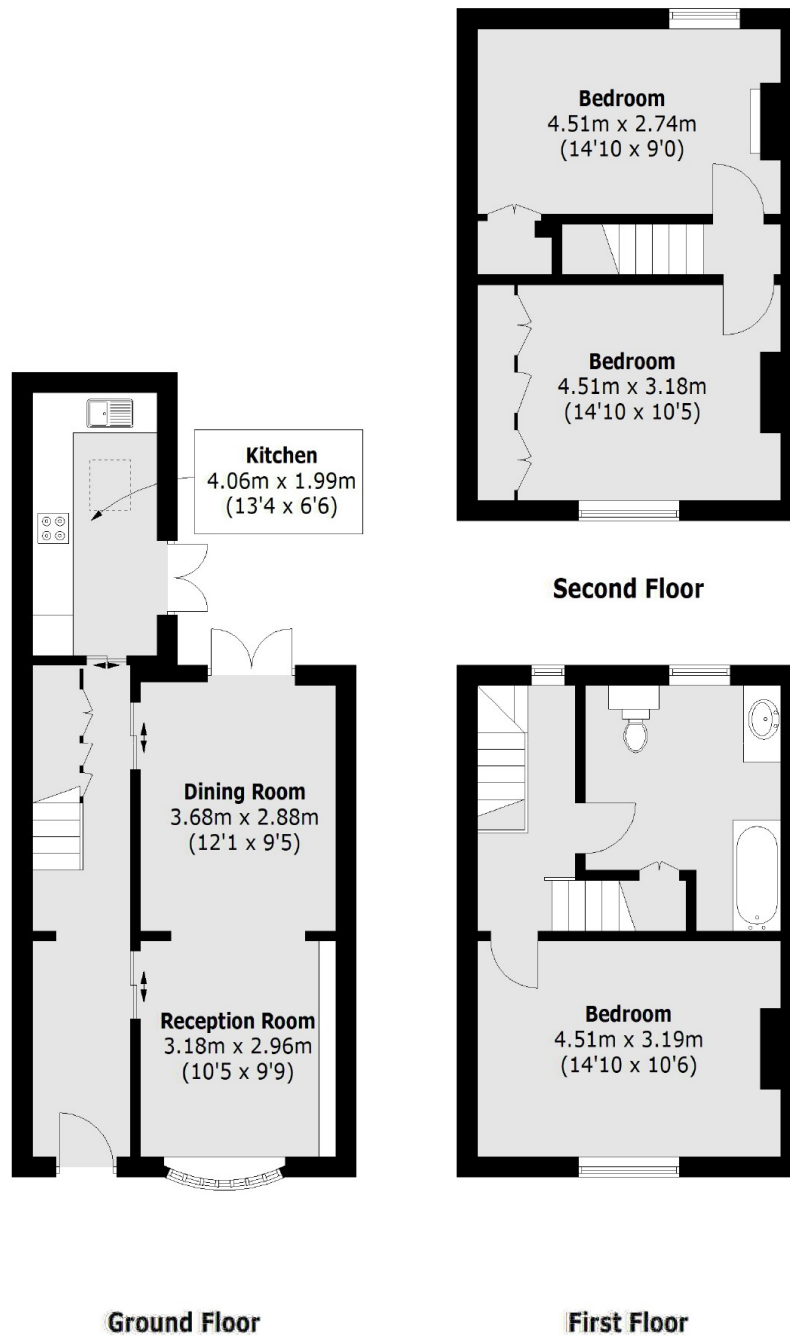


Lizban Street, SE3

Accommodation comprises of a through reception room with wood floors and doors onto the rear garden and a modern fitted kitchen and again double doors onto the garden. Upstairs is a double bedroom with floor to ceiling wardrobes and a newly fitted bathroom and there are two further double bedrooms on the top floor. There is a low maintenance rear garden .



Lizban Street, London, SE3



Total area (approx.): 103.1 sq. m (1,109.8 sq. ft)