



Charlton Road, SE3

£399,950

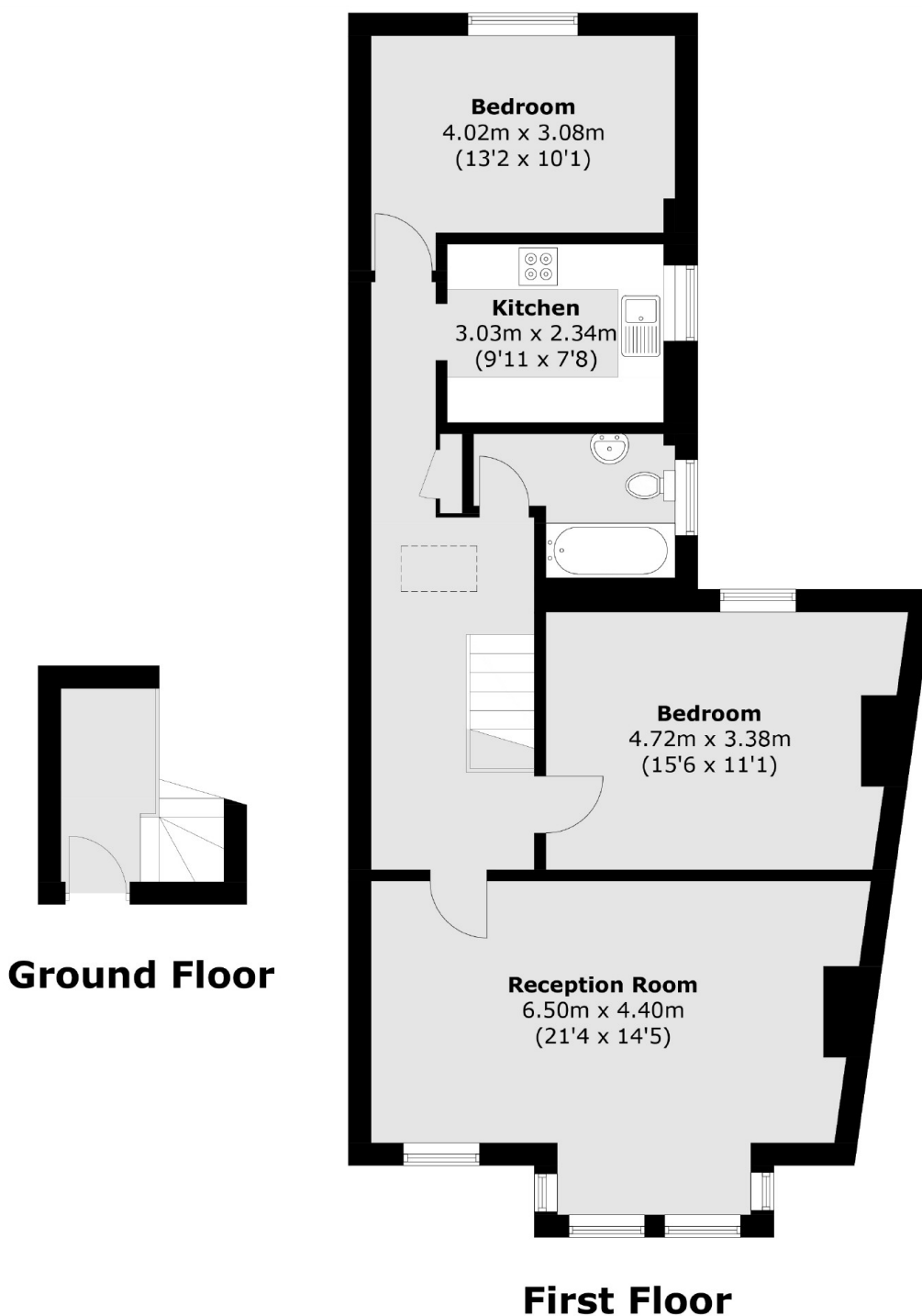
Bright and spacious first floor conversion flat with two double bedrooms, neutral decor and is offered onto the market with no chain. This large property benefits from a long lease, comes with a loft space which, with planning permission could offer a further bedroom and bathroom.

Situated minutes from Blackheath Royal Standard in excellent position for Westcombe Park Station, bus routes to North Greenwich and the Elizabeth Line and within catchment area of both Sherington and Invicta primary schools and Leigh Academy secondary school.

Features

- Two Double Bedroom Flat
- No Chain
- Excellent Location for Transport
- Close To Shops
- Large Loft Space
- Neutrally Decorated

Charlton Road, London, SE3



Total area (approx.): 83.4 sq. m (897.7 sq. ft)