



## Shooters Hill Road, SE3

### £600,000

Stunning three bedroom garden flat which offers excellent living space a gated, private parking space and is in good order throughout.

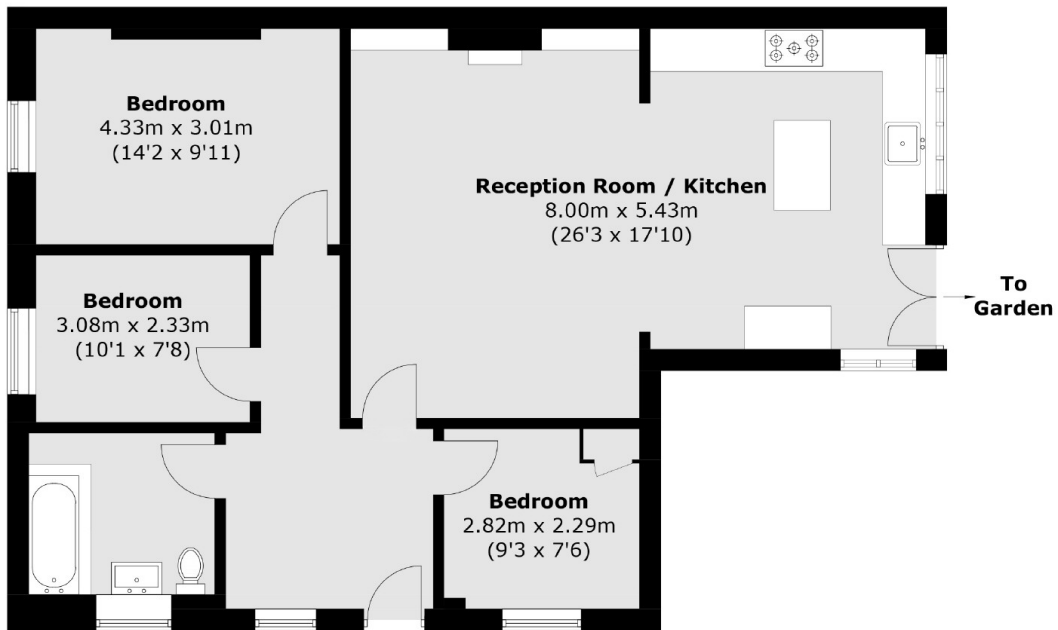
Accommodation comprises of a large reception room which has bespoke built in book shelves, a feature fireplace and is open plan to a well appointed kitchen with lots of storage and an island unit. There are three bedrooms and a beautifully finished bathroom. The private South facing garden offers excellent space and is low maintenance.

Situated in an excellent position for transport links, close to Blackheath Royal Standard for its shops, cafés and amenities. There is a regular bus route to North Greenwich Jubilee line, and the property is in close proximity to both Blackheath and Westcombe Park Station.

### Features

- Three Bedrooms
- South Facing Garden
- Large Kitchen Breakfast Room
- Gated Private Parking Space
- Close To Transport
- Close To The Shops And Cafés

# Shooters Hill Road, London, SE3



Total area (approx.): 86.9 sq. m (935.3 sq. ft)