



Brook Lane, SE3

£400,000

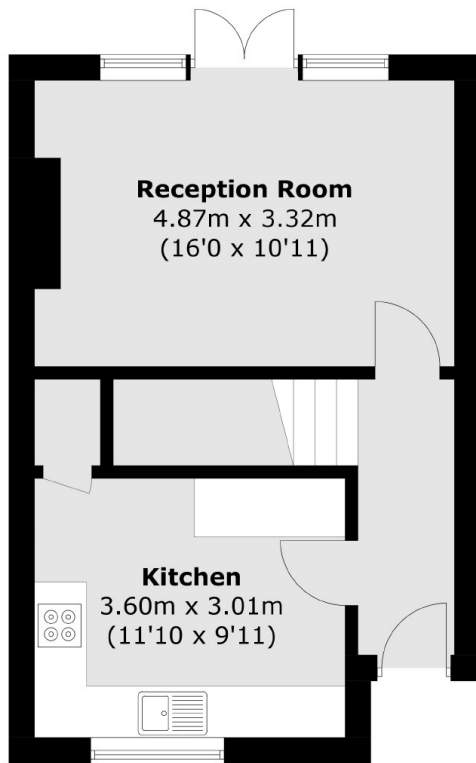
Well presented split level maisonette with a large south facing private garden which must be viewed to appreciate the light and space and features that it has to offer. Arranged over two levels, there is a large fitted kitchen with integrated appliances, a rear reception with double glazed doors onto the rear garden. There are two double bedrooms upstairs with a well appointed family bathroom.

Situated in an excellent position for Kidbrooke Station, Blackheath Village and for local shops and schools. Minutes from bus routes to North Greenwich Jubilee Line.

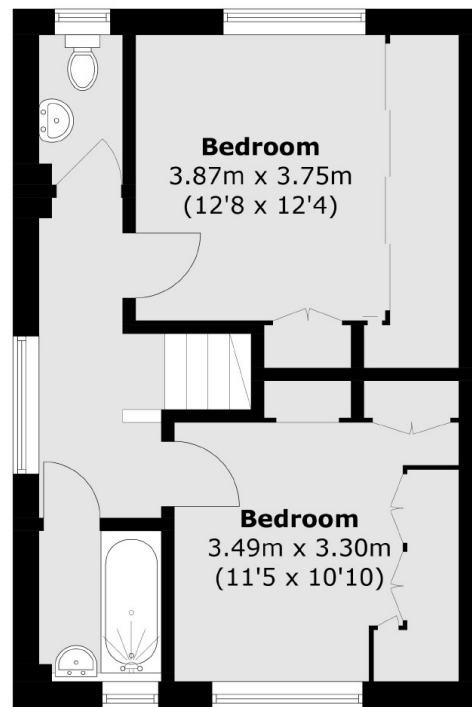
Features

- Two Double Bedroom Flat
- Large South Facing Garden
- Close To Kidbrooke Station
- Close To Local shops
- Large Kitchen/ Diner
- Excellent Condition Throughout

Brook Lane, London, SE3



Ground Floor



First Floor

Total area (approx.): 72.8 sq. m (783.6 sq. ft)