



## Rolfe Terrace, SE18

### £340,000

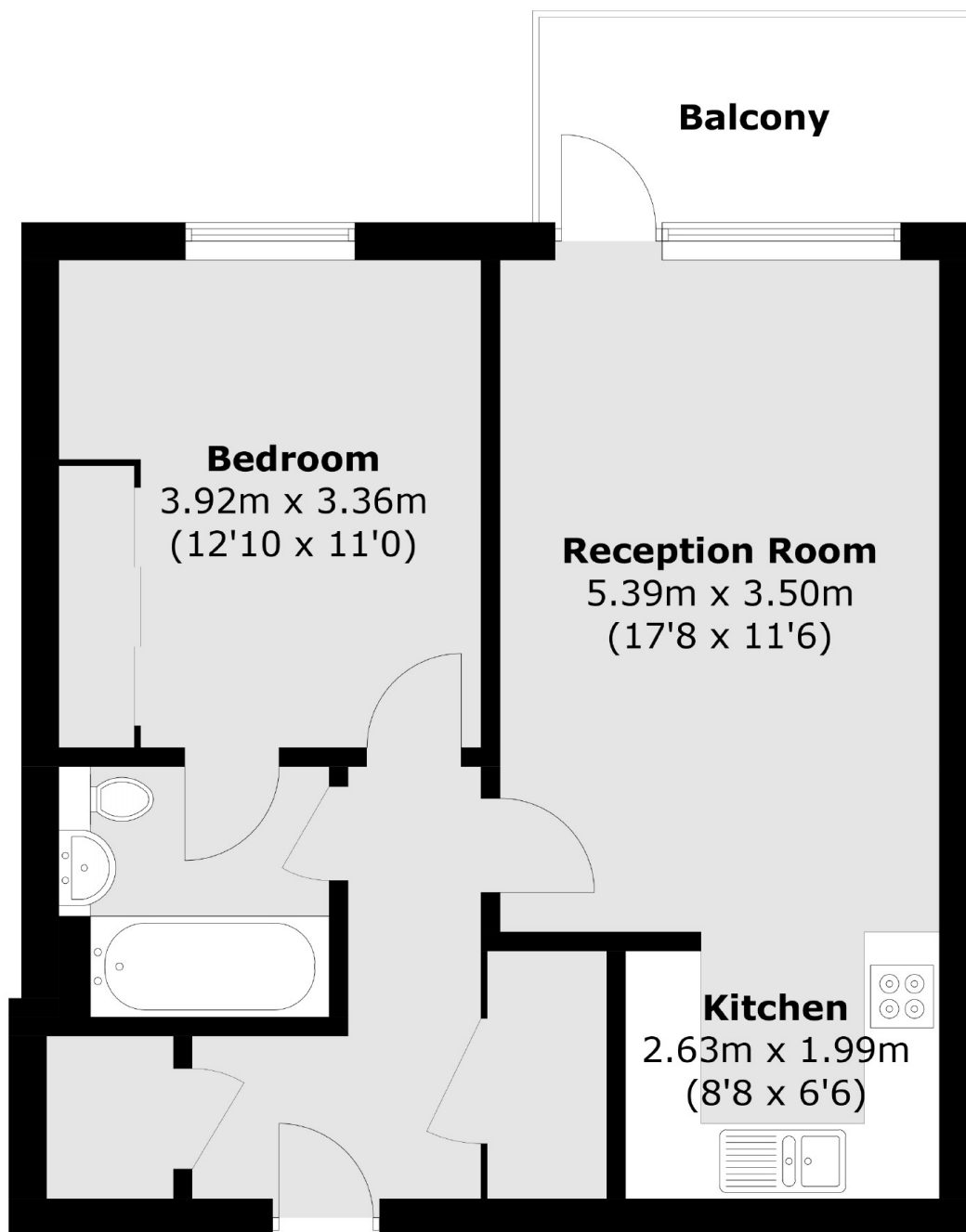
Excellent top floor one bedroom modern apartment, built in 2020 in superb condition and offered with no chain.

Situated in a quiet residential development minutes to the centre of Woolwich for the DLR and over head station plus all the benefits of the town centre. The Elizabeth line is within close proximity and the property is 15 minutes to Canary Wharf and 25 minutes to Liverpool street door to door.

### Features

- One Bedroom Apartment
- Fourth Floor With Balcony
- Minutes From The DLR
- Sought After Development
- Concierge
- No Chain

# Rolfe Terrace, London, SE18



Total area (approx.): 52.9 sq. m (569.4 sq. ft)  
Balcony area : 5.6 sq. m (60.3 sq. ft)