



## Victoria Way, SE7

£525,000

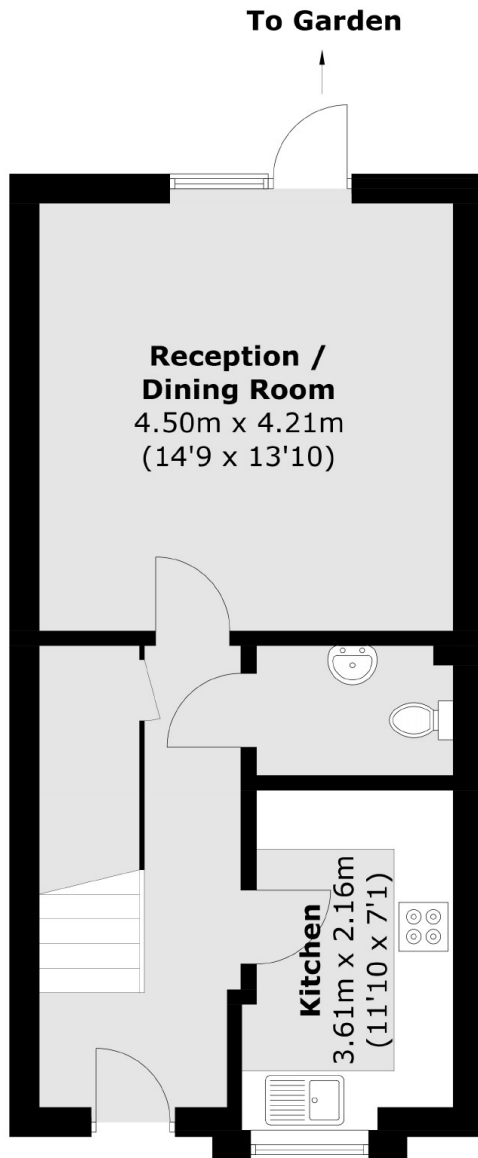
Two double bedroom terraced house, built in 2008, which offers great living accommodation, a good sized West facing garden and a driveway to front. Accommodation comprises of two double bedrooms, a family bathroom, plus a downstairs w/c which is large enough for disabled access. There is a fitted kitchen and bright reception which open looks the garden. Must be viewed.

Situated in a fantastic location for transport, including Charlton Station and for bus routes to both the Elizabeth Line and North Greenwich Jubilee Line.

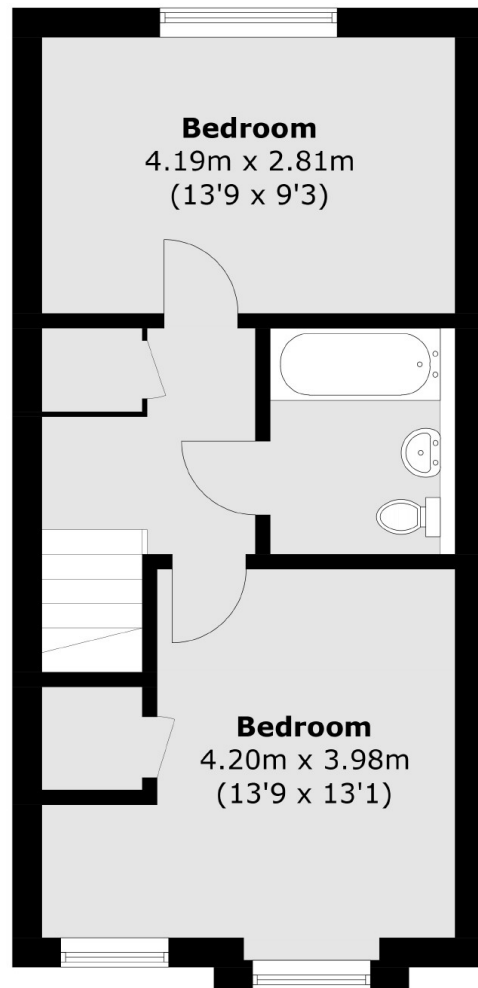
### Features

- Two Double Bedrooms
- Minutes From The Station
- Close To Shops And Superstores
- West Facing Garden
- Driveway
- Modern Build

# Victoria Way, London, SE7



**Ground Floor**



**First Floor**

Total area (approx.): 78.2 sq. m (841.7 sq. ft)