



Charlton Road, SE3

£425,000

Two double bedroom ground floor conversion flat which is offered with no chain and measures 82 squares meters, and includes a cellar for storage.

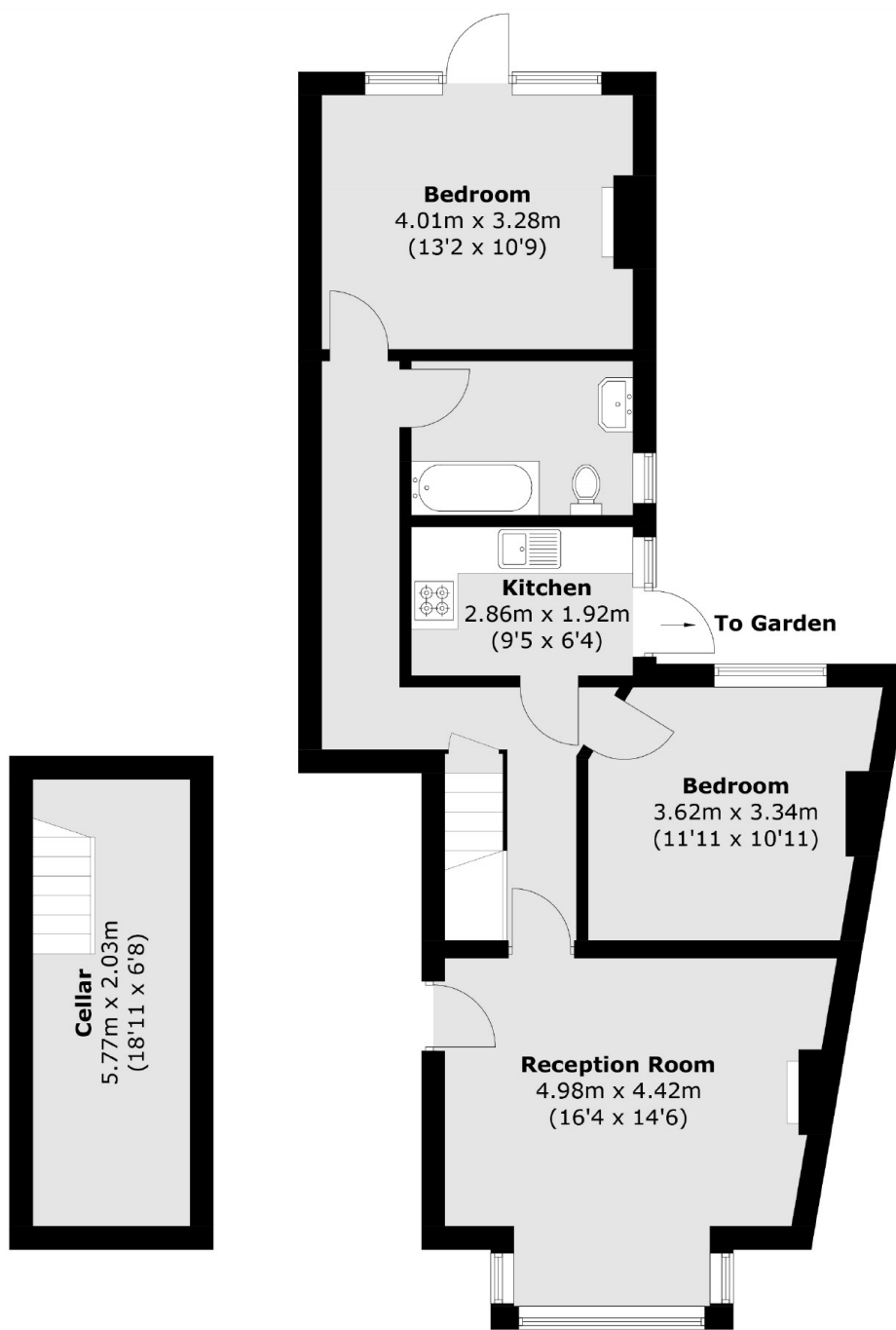
The property is neutrally decorated throughout and comes with a new lease of 125 years, has a large rear garden and great potential to improve. Must be viewed.

Situated minutes from Blackheath Royal Standard in excellent position for Westcombe Park Station, bus routes to North Greenwich and the Elizabeth Line and within catchment area of both Sherington and Invicta primary schools and Leigh Academy secondary school.

Features

- Two Double Bedrooms
- Large Garden
- New Lease
- Cellar Space
- Excellent For Transport
- No Chain

Charlton Road, London, SE3



Lower Ground Floor

Ground Floor

Total area (approx.): 81.7 sq. m (879.4 sq. ft)