



Humber Road, SE3

£2,000,000

Offered for sale for the first time in thirty years comes this stunning double fronted six bedroom semi detached Victorian family home. Teeming with period features, this beautiful house needs to be viewed to appreciate the space, light and views across the city that it has to offer.

Situated in the heart of Westcombe Park, minutes from Westcombe Park Station and within catchment area of Halstow primary school.

There are shops and amenities close by and regular bus routes to North Greenwich. Greenwich Royal Park and the popular Greenwich Pleasance are within walking distance.

Features

- Six Bedroom Victorian Villa
- Minutes from Westcombe Park
- Period Features Throughout
- Three Reception Rooms
- Stunning Garden
- Roof Terrace With Views



Humber Road, SE3

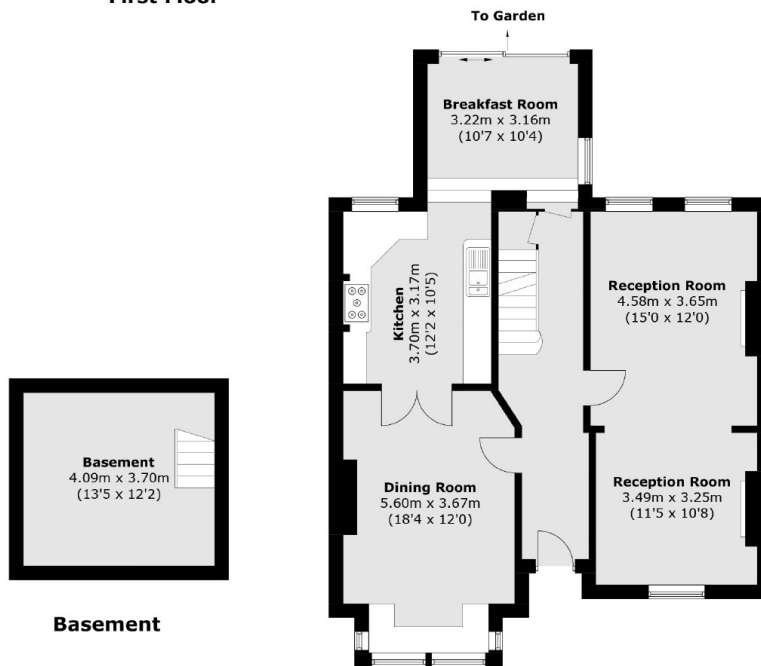
Accommodation comprises of a bright and spacious hallway which leads to onto a through reception room with fireplaces and dual aspect windows. A second reception room which is open plan to the kitchen and has access to a further living space and has views over the garden. There is a large cellar which has excellent storage space.

The house is arranged over four split levels, the first floor has four double bedrooms and a family bathroom with a four piece suite. Stairs take you to a a decked roof terrace with views over the city and space for dining. The top floor has two further double bedrooms and a large bathroom with lots of storage and utility area.

There is access to the side of the house which leads onto the landscaped rear garden.



Humber Road, London, SE3



Total area (approx.): 247.8 sq. m (2,667.2 sq. ft)
Roof Terrace area (approx.): 10.8 sq. m (116.2 sq. ft)
(Excluding Eaves)